

Search ORNL DAAC

in Search

DAAC Home > Get Data > NASA Projects > MODIS/ASTER Airborne Simulator (MASTER) > User guide

## MASTER: Airborne Science, southwestern US, June, 2000

### Get Data

Documentation Revision Date: 2023-04-11

Dataset Version: 1.1

### Summary

This dataset includes Level 1B (L1B) data products from the MODIS/ASTER Airborne Simulator (MASTER) instrument. The spectral data were collected during 12 flights aboard a DOE B-200 aircraft over California, Nevada, Arizona, and New Mexico, U.S., on 2000-06-01 to 2000-06-17. This deployment was coordinated by the U.S. Department of Energy's Remote Sensing Laboratory (RSL) located at Nellis Air Force Base near Las Vegas, Nevada. Data products include L1B georeferenced multispectral imagery of calibrated radiance in 50 bands covering wavelengths of 0.460 to 12.879 micrometers at approximately 20-meter spatial resolution. The L1B file format is HDF-4. In addition, the dataset includes flight paths, spectral band information, instrument configuration, ancillary notes, and summary information for each flight, and browse images derived from each L1B data file.

The MASTER instrument is a modified Daedalus Wildfire scanning spectrometer that flies on a variety of multi-altitude research aircraft and provides spectral information similar to that provided by the Moderate Resolution Imaging Spectroradiometer (MODIS) and the Advanced Spaceborne Thermal Emission and Reflection Radiometer (ASTER), which are aboard two NASA Earth Observing System satellites: Terra and Aqua. MASTER provides data in 50 channels spanning visible to thermal infrared wavelengths (0.4 – 13  $\mu\text{m}$ ). Its data have been used to study geological patterns, land covers, ecological disturbances, and other phenomena that affect Earth surface properties.

This dataset includes a total of 260 data files: 95 files in Hierarchical Data Format (HDF-4; \*.hdf) format, 48 text (\*.txt) files, 12 archives of text files that are zipped (\*.zip), 12 flight maps as GIF (\*.gif) images, and 93 browse images in JPEG (\*.jpg) format.

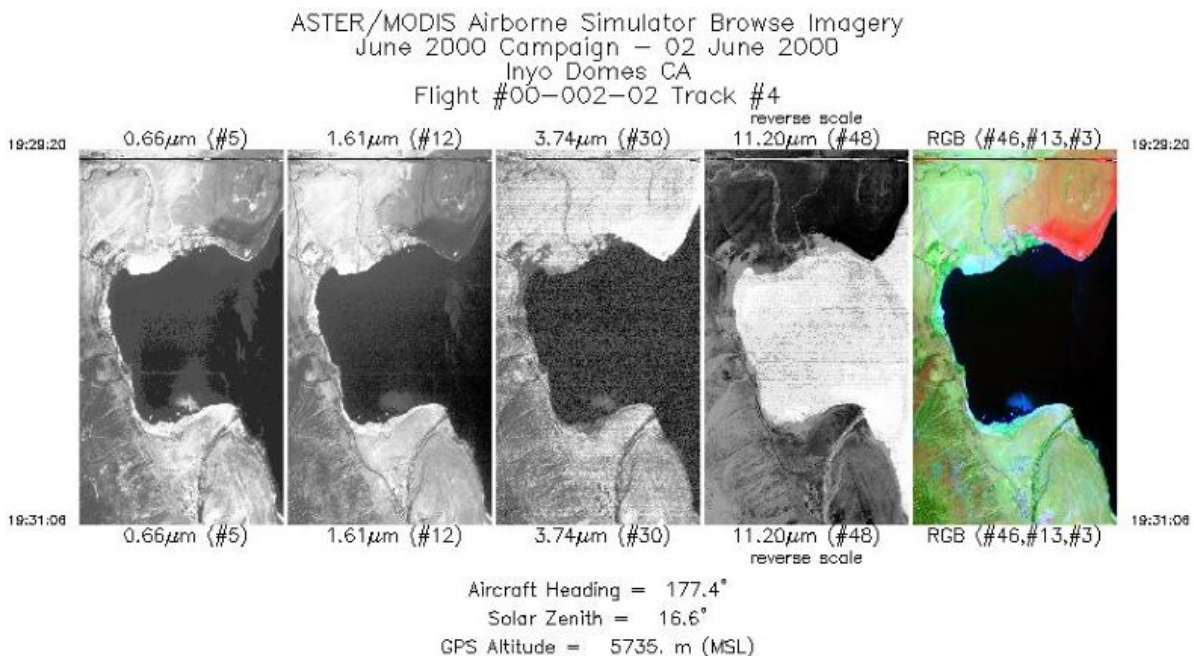


Figure 1. Single-band images and a RGB composite image from flight track 4 acquired on 02 June 2000 over Mono Lake near Lee Vining, California, U.S. Source: MASTERL1B\_0000202\_04\_20000602\_1929\_1931\_V01.jpg

### Citation

Hook, S.J., J.S. Myers, K.J. Thome, M. Fitzgerald, A.B. Kahle, Airborne Sensor Facility NASA Ames Research Center, F.D. Palluconi, E.A. Abbott, A. Gillespie, J.P. Schieldge, P.R. Christensen, T.J. Schmutge, and J.C. Ritchie. 2022. MASTER: Airborne Science, southwestern US, June, 2000. ORNL DAAC, Oak Ridge, Tennessee, USA. <https://doi.org/10.3334/ORNLDAAC/2096>

### Table of Contents

1. Dataset Overview

2. [Data Characteristics](#)
3. [Application and Derivation](#)
4. [Quality Assessment](#)
5. [Data Acquisition, Materials, and Methods](#)
6. [Data Access](#)
7. [References](#)
8. [Dataset Revisions](#)

## 1. Dataset Overview

This dataset includes Level 1B (L1B) data products from the MODIS/ASTER Airborne Simulator (MASTER) instrument. The spectral data were collected during 12 flights aboard a DOE B-200 aircraft over California, Nevada, Arizona, and New Mexico, U.S., on 2000-06-01 to 2000-06-17. This deployment was coordinated by the U.S. Department of Energy's Remote Sensing Laboratory (RSL) located at Nellis Air Force Base near Las Vegas, Nevada. Data products include L1B georeferenced multispectral imagery of calibrated radiance in 50 bands covering wavelengths of 0.460 to 12.879 micrometers at approximately 20-meter spatial resolution. The L1B file format is HDF-4. In addition, the dataset includes flight paths, spectral band information, instrument configuration, ancillary notes, and summary information for each flight, and browse images derived from each L1B data file.

The MASTER instrument is a modified Daedalus Wildfire scanning spectrometer that flies on a variety of multi-altitude research aircraft and provides spectral information similar to that provided by the Moderate Resolution Imaging Spectroradiometer (MODIS) and the Advanced Spaceborne Thermal Emission and Reflection Radiometer (ASTER), which are aboard two NASA Earth Observing System satellites: Terra and Aqua. MASTER provides data in 50 channels spanning visible to thermal infrared wavelengths (0.4 – 13  $\mu\text{m}$ ). Its data have been used to study geological patterns, land covers, ecological disturbances, and other phenomena that affect Earth surface properties.

**Project:** [MODIS/ASTER Airborne Simulator](#)

The MODIS/ASTER Airborne Simulator (MASTER) is a scanning spectrometer which flies on a variety of multi-altitude research aircraft and provides data similar to the Moderate Resolution Imaging Spectroradiometer (MODIS) and the Advanced Spaceborne Thermal Emission and Reflection Radiometer (ASTER). MASTER first flew in 1998 and has ongoing deployments as a Facility Instrument in the NASA Airborne Science Program (ASP). MASTER is a joint project involving the Airborne Sensor Facility (ASF) at the Ames Research Center, the Jet Propulsion Laboratory (JPL), and the Earth Resources Observation and Science Center (EROS).

### Related Publications

Hook, S.J. Myers, J.J., Thome, K.J., Fitzgerald, M. and A.B. Kahle. 2001. The MODIS/ASTER airborne simulator (MASTER) - a new instrument for earth science studies. *Remote Sensing of Environment* 76:93–102. [https://doi.org/10.1016/S0034-4257\(00\)00195-4](https://doi.org/10.1016/S0034-4257(00)00195-4)

### Related Datasets

Additional MASTER datasets are available on the ORNL DAAC [MASTER](#) project page.

### Acknowledgments

The MASTER instrument is maintained and operated by the Airborne Sensor Facility (ASF) at NASA Ames Research Center in Mountain View, California, under the oversight of the EOS Project Science Office at NASA Goddard. Data processing was conducted at NASA Ames Research Center and the Jet Propulsion Laboratory at the California Institute of Technology in Pasadena, California.

## 2. Data Characteristics

**Spatial Coverage:** Portions of California, Nevada, Arizona, and New Mexico, U.S.

**Spatial Resolution:** 4 to 26 m

**Temporal Coverage:** 2000-06-01 to 2000-06-17

**Temporal Resolution:** One-time estimate

**Study Area:** All latitudes and longitudes given in decimal degrees.

Site	Westernmost Longitude	Easternmost Longitude	Northernmost Latitude	Southernmost Latitude
western U.S.	-120.311	-106.006	39.428	31.282

### Data File Information

This dataset includes a total of 260 data files: 95 files in Hierarchical Data Format (HDF-4; \*.hdf) format, 48 text (\*.txt) files, 12 archives of text files that are zipped (\*.zip), 12 flight maps as GIF (\*.gif) images, and 93 browse images in JPEG (\*.jpg) format.

There are different numbers of each type of file, which corresponds to the number of "flights" and "flight tracks. A "flight" is flown on a single day, and a "flight track" typically refers to a segment of a given flight.

- There are 12 flights, which include 96 flight tracks.
- For each flight track, there is one L1B data file in HDF format and one auxiliary browse image (\*.jpg).
- For each flight, there is a collection of auxiliary files providing information about the flight and instrument configuration.

The primary data files are named MASTERLAA\_BBBBBBBB\_CC\_YYYYMMDD\_EEFF\_GGHH\_V0J-X.ext (e.g., MASTERL1B\_0000201\_01\_20000601\_2302\_2305\_V01.hdf).

The flight track-level browse images are named MASTERLAA\_BBBBBBBB\_CC\_YYYYMMDD\_EEFF\_GGHH\_V0J.jpg (e.g., MASTERL1B\_0000201\_01\_20000601\_2302\_2305\_V01.jpg).

The deployment-level auxiliary files are named MASTER\_BBBBBBBB\_YYYYMMDD\_X.ext (e.g., MASTER\_0000201\_20000601\_config.txt).

- AA = "1B", indicating L1B data level,
- BBBBBBBB = flight number (Table 2),

- CC = flight track (Table 2)
- YYYYMMDD = date of sampling,
- EEFF = starting time at EE hour and FF minute,
- GGHH = ending time at GG hour and HH minute,
- J = version number for file,
- X = the file content (see Table 1), and
- ext = "hdf", "gif", "jpg", "txt", or "zip", indicating the file extension.

**Table 1.** File names and descriptions.

File Name	Level	File Type	Total Files	Description
<b>Primary Data Files</b>				
MASTERL1B_BBBBBBBB_CC_YYYYMMDD_EEFF_GGHH_V0J.hdf	L1B	HDF-4	95	Multispectral radiance in 50 bands, pixel coordinates, sensor configuration, aircraft platform data, analysis parameters. The "CalibratedData" variable provides estimates of radiance in units of $W\ m^{-2}\ sr^{-1}$ per micron.
<b>Auxiliary files</b>				
MASTERL1B_BBBBBBBB_CC_YYYYMMDD_EEFF_GGHH_V0J.jpg	L1B	JPEG	93	Browse figures; one per flight track, multiple tracks per flight.
MASTER_BBBBBBBB_YYYYMMDD_ancillary.txt	-	Text	12	Ancillary information about flight including notes on aircraft platform, mission objective, and data evaluation.
MASTER_BBBBBBBB_YYYYMMDD_config.txt	-	Text	12	Instrument configuration information for flight.
MASTER_BBBBBBBB_YYYYMMDD_flightpath.gif	-	GIF	12	Map showing flight paths.
MASTER_BBBBBBBB_YYYYMMDD_spectral_band_info.txt	-	Text	12	Spectral band information.
MASTER_BBBBBBBB_YYYYMMDD_spectral_response_table.zip	-	Text	12	Spectral response tables by band (ZIP archive of 50 text files).
MASTER_BBBBBBBB_YYYYMMDD_summary.txt	-	Text	12	Time and coordinates for start and end of flight tracks along with the number of scan lines, solar and instrument angles, aircraft altitude, and additional information. FTLT = flight track number.

**Data File Details**

The HDF-4 files contain swath trajectory data using longitude, latitude coordinates. The spatial resolution is 4 to 26 m and is a function of aircraft altitude.

**Table 2.** Number of flight tracks for each MASTER flight during this 2000 deployment over California (CA), Nevada (NV), Arizona (AZ), and New Mexico (NM).

Date	Flight Number	Locations (USA)	Flight Tracks
2000-06-01	0000201	Lake Mead	3
2000-06-02	0000202	Inyo Domes CA	12
2000-06-03	0000203	Phoenix AZ	10
2000-06-04	0000204	Salton Sea, CA	9
2000-06-06	0000205	Los Angeles CA	9
2000-06-07	0000206	Los Alamos NM	8
2000-06-14	0000209	Los Alamos NM	6
2000-06-14	0000210	Elephant Butte NM	12
2000-06-15	0000211	San Pedro River AZ	14
2000-06-16	0000212	Lake Tahoe CA/NV	7
2000-06-17	0000213	Death Valley CA	3
2000-06-17	0000214	Altadena CA	2
Total			95

**3. Application and Derivation**

The primary objective of MASTER is to: (a) collect ASTER-like and MODIS-like land datasets to support the validation of the ASTER and MODIS geophysical retrieval algorithms; (b) collect these datasets at a higher resolution than the spaceborne datasets to permit scaling studies and comparisons with in-situ measurements; and (c) under fly the EOS-AM1 ASTER and MODIS sensors to provide an additional radiometric calibration to assist with in-flight instrument performance characterization. Calibration is particularly important for ASTER where on-board calibration is dependent on a single black body in the TIR and only partial aperture illumination in the VNIR.

A secondary objective of MASTER is to: (a) provide both a backup instrument and backup modules for the current MODIS Airborne simulator, which is committed to a program of atmospheric and oceanic measurements; and (b) provide a wider spectral and dynamic range alternative to the use of the Thematic Mapper (TM) airborne simulator and Thermal Infrared Multispectral Scanner (TIMS) airborne scanners (JPL, 2021b).

MASTER imagery has been used for mapping wildfires and their impacts (Veraverbeke et al., 2011), land covers (Li and Moon, 2004), coral reefs (Capolsini et al., 2003), and urban heat islands (Zhao and Wentz, 2016).

## 4. Quality Assessment

The MASTER instrument channels are calibrated spectrally and radiometrically in the laboratory preflight and postflight. The mid-infrared and thermal infrared channels (26–50) are also radiometrically calibrated in-flight by viewing an internal hot and cold blackbody with each scanline (Hook et al., 2001). Three calibration and validation experiments were conducted in 1998–2001 (Hook et al., 2001; JPL, 2021a). Spectral response information for this deployment is included in the *MASTER\_BBBBBBBB\_YYYYMMDD\_spectral\_response\_table.zip* files.

## 5. Data Acquisition, Materials, and Methods

The MASTER instrument was developed by the NASA Ames Research Center in conjunction with the Jet Propulsion Laboratory. The instrument consists of three key components: the scanning spectrometer, the digitizer, and the storage system. The scanning unit was built by Sensys Technology (formerly Daedalus Enterprises) and the digitizer was a collaborative effort between Berkeley Camera Engineering and the Ames Airborne Sensor Facility (ASF). The data storage system and overall system integration were also provided by the ASF.

The MASTER instrument is similar to the MODIS Airborne Simulator (MAS) developed by the MODIS project (King et al., 1996). However, it has two key differences. First, MASTER supports a variety of scan speeds allowing it to acquire contiguous imagery from a variety of altitudes with different pixel sizes. Second, the channel positions are configured to closely match those of ASTER and MODIS. A detailed description of the instrument and optical system are provided by Hook et al. (2001) and King et al. (1996), respectively.

For this deployment, the MASTER instrument was flown on a DOE B-200 aircraft at altitudes of 3020 - 3050 m above sea level.

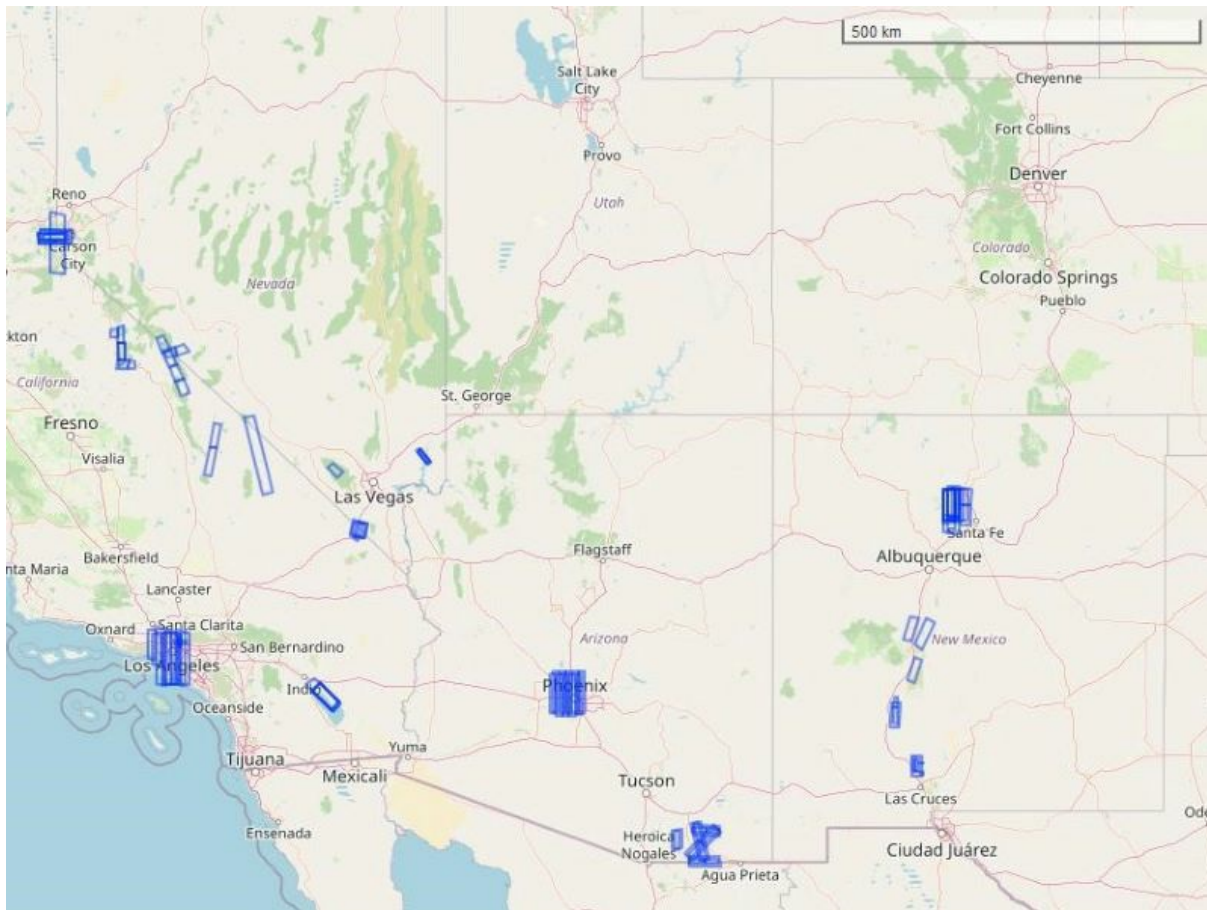


Figure 2. Flight tracks in this dataset represented as blue rectangular polygons. Basemap: © [OpenStreetMap](#) contributors.

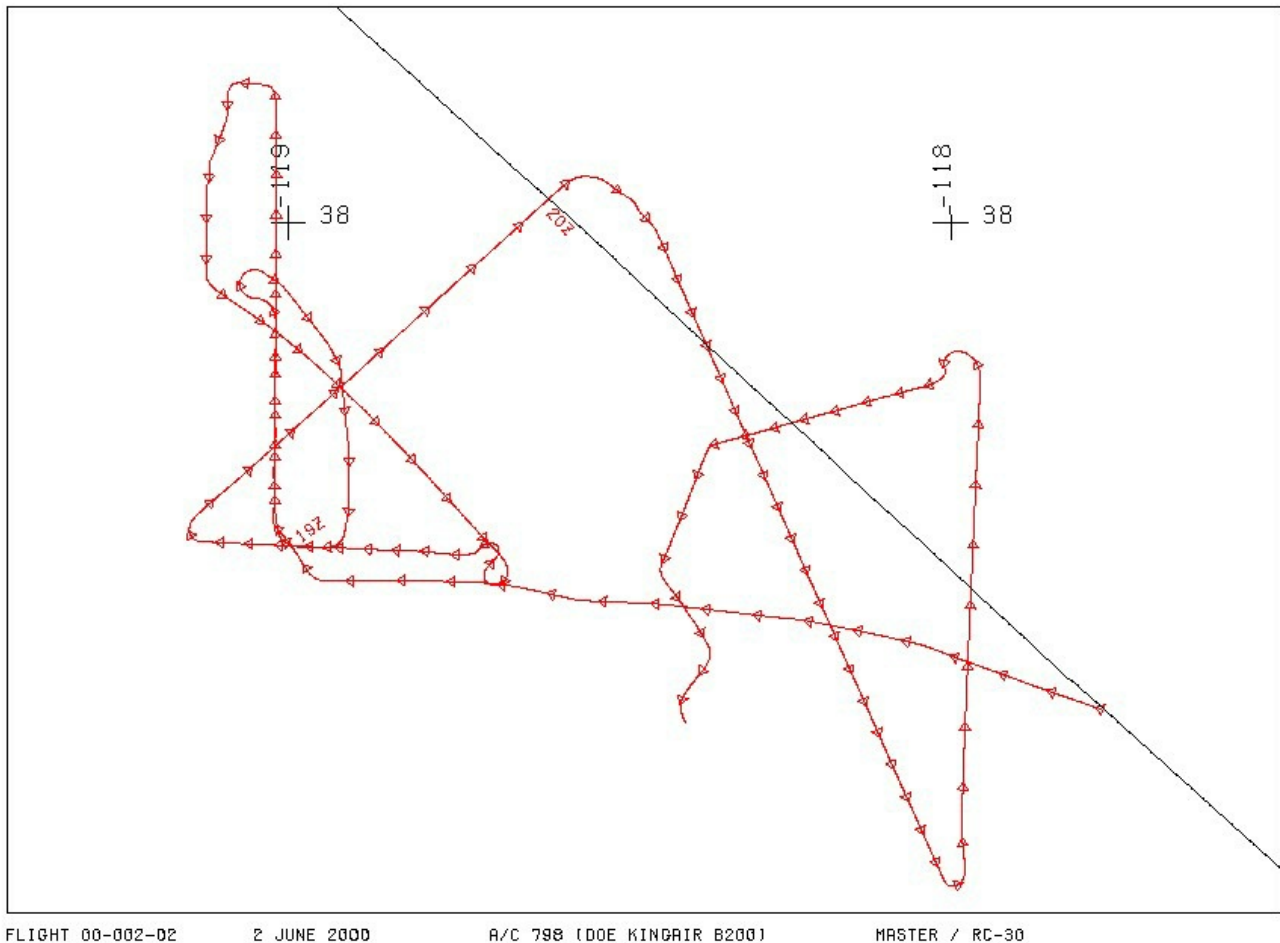


Figure 3. Flight path is shown for 2 June 2000. Flight 0000202 and 12 flight tracks crossing the California - Nevada border near Yosemite National Park. Source: MASTER\_0000202\_20000602\_flightpath.gif.

## 6. Data Access

These data are available through the Oak Ridge National Laboratory (ORNL) Distributed Active Archive Center (DAAC).

MASTER: Airborne Science, southwestern US, June, 2000

Contact for Data Center Access Information:

- E-mail: [uso@daac.ornl.gov](mailto:uso@daac.ornl.gov)
- Telephone: +1 (865) 241-3952

## 7. References

- Capolsini, P., S. Andréfouët, C. Rion, and C. Payri. 2003. A comparison of Landsat ETM+, SPOT HRV, Ikonos, ASTER, and airborne MASTER data for coral reef habitat mapping in South Pacific islands. *Canadian Journal of Remote Sensing* 29:187-200. <https://doi.org/10.5589/m02-088>
- Coll, C., V. Caselles, E. Rubio, F. Sospedra, and E. Valor. 2001. Temperature and emissivity separation from calibrated data of the Digital Airborne Imaging Spectrometer. *Remote Sensing of Environment* 76:250-259. [https://doi.org/10.1016/S0034-4257\(00\)00207-8](https://doi.org/10.1016/S0034-4257(00)00207-8)
- Hook, S.J. Myers, J.J., Thome, K.J., Fitzgerald, M., and A.B. Kahle. 2001. The MODIS/ASTER airborne simulator (MASTER) - a new instrument for earth science studies. *Remote Sensing of Environment* 76:93-102. [https://doi.org/10.1016/S0034-4257\(00\)00195-4](https://doi.org/10.1016/S0034-4257(00)00195-4)
- JPL. 2021a. Calibration and Validation, MASTER: MODIS/ASTER Airborne Simulator. Jet Propulsion Laboratory, California Institute of Technology, Pasadena, California, USA. <https://masterprojects.jpl.nasa.gov/cal-val>
- JPL. 2021b. Science objectives, MASTER: MODIS/ASTER Airborne Simulator. Jet Propulsion Laboratory, California Institute of Technology, Pasadena, California, USA. <https://masterprojects.jpl.nasa.gov/objectives>
- King, M.D., W.P. Menzel, P.S. Grant, J.S. Myers, G.T. Arnold, S.E. Platnick, L.E. Gumley, S.C. Tsay, C.C. Moeller, M. Fitzgerald, K.S. Brown, and F.G. Osterwisch. 1996. Airborne scanning spectrometer for remote sensing of cloud, aerosol, water vapor and surface properties. *J. Atmospheric and Oceanic Technology* 13:777-794. [https://doi.org/10.1175/1520-0426\(1996\)013<0777:ASSFRS>2.0.CO;2](https://doi.org/10.1175/1520-0426(1996)013<0777:ASSFRS>2.0.CO;2)
- Li, P., and W.M. Moon. 2004. Land cover classification using MODIS-ASTER airborne simulator (MASTER) data and NDVI: A case study of the Kochang area, Korea. *Canadian J. Remote Sensing* 30:123-126. <https://doi.org/10.5589/m03-061>
- Veraverbeke, S., S. Harris, and S. Hook. 2011. Evaluating spectral indices for burned area discrimination using MODIS/ASTER (MASTER) airborne simulator data. *Remote Sensing of Environment* 115:2702-2709. <https://doi.org/10.1016/j.rse.2011.06.010>
- Zhao, Q., and E.A. Wentz. 2016. A MODIS/ASTER Airborne Simulator (MASTER) imagery for urban heat island research. *Data* 1:7. <https://doi.org/10.3390/data1010007>



## 8. Dataset Revisions

Version	Release Date	Revision Notes
1.1	2023-01-27	An obsolete data file from Flight 0000214 was deleted .
1.0	2022-10-05	Original publication



[Privacy Policy](#) | [Feedback](#) | [Help](#)



### [Home](#)

### [About Us](#)

[Mission](#)  
[Data Use and Citation](#)  
[Policy](#)  
[User Working Group](#)  
[Partners](#)

### [Get Data](#)

[Science Themes](#)  
[NASA Projects](#)  
[All Datasets](#)

### [Submit Data](#)

[Submit Data Form](#)  
[Data Scope and](#)  
[Acceptance](#)  
[Data Authorship Policy](#)  
[Data Publication Timeline](#)  
[Detailed Submission](#)  
[Guidelines](#)

### [Tools](#)

[MODIS](#)  
[THREDDS](#)  
[SDAT](#)  
[Daymet](#)  
[Airborne Data Visualizer](#)  
[Soil Moisture Visualizer](#)  
[Land - Water Checker](#)

### [Resources](#)

[Learning](#)  
[Data Management](#)  
[News](#)  
[Earthdata Forum](#) [↗](#)

### [Contact Us](#)