

# MASTER: Geological Earth Mapping Experiment (GEMx), California-Arizona, Summer 2023

## Get Data

Documentation Revision Date: 2024-03-28

Dataset Version: 1

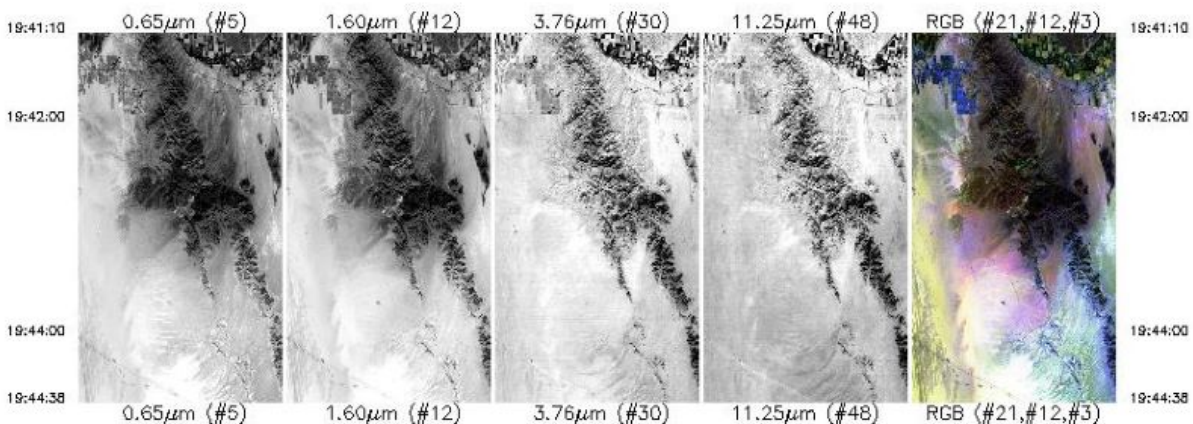
### Summary

This dataset includes Level 1B (L1B) and Level 2 (L2) data products from the MODIS/ASTER Airborne Simulator (MASTER) instrument. The spectral data were collected during 13 flights aboard a NASA ER-2 aircraft over California, Oregon, Nevada, and Arizona, US, from 2023-04-25 to 2023-09-26. The Geological Earth Mapping Experiment (GEMx) research project used NASA's Airborne Visible/Infrared Imaging Spectrometer (AVIRIS), Hyperspectral Thermal Emission Spectrometer (HyTES), and MODIS/ASTER Airborne Simulator (MASTER) instruments to collect the measurements over the country's arid and semi-arid regions, including parts of California, Nevada, Arizona, and New Mexico, to map portions of southwest US for critical minerals. Data products include L1B georeferenced multispectral imagery of calibrated radiance in 50 bands covering wavelengths of 0.460 to 12.879 micrometers at approximately 50-meter spatial resolution. Derived L2 data products are emissivity in five bands in thermal infrared range (8.58 to 12.13 micrometers) and land surface temperature. The L1B file format is HDF-4, and L2 products are provided in ENVI and KMZ formats. In addition, the dataset includes the flight path, spectral band information, instrument configuration, ancillary notes, and summary information for each flight, and browse images derived from each L1B data file.

The MASTER instrument is a modified Daedalus Wildfire scanning spectrometer that flies on a variety of multi-altitude research aircraft and provides spectral information similar to that provided by the Moderate Resolution Imaging Spectroradiometer (MODIS) and the Advanced Spaceborne Thermal Emission and Reflection Radiometer (ASTER), which are aboard two NASA Earth Observing System satellites: Terra and Aqua. MASTER provides data in 50 channels spanning visible to thermal infrared wavelengths (0.4 – 13 μm). Its data have been used to study geological patterns, land covers, ecological disturbances, and other phenomena that affect Earth surface properties.

This dataset includes a total of 993 data files: 120 files in Hierarchical Data Format (HDF-4; \*.hdf) format, 202 files in Keyhole Markup Language Zipped (KMZ; \*.kmz) format, 101 Portable Network Graphics (PNG; \*.png) files that are compressed (\*.zip), 32 text (\*.txt) files, 1 archives of text files that are zipped (\*.zip), 13 flight maps as GIF (\*.gif) images, and 120 browse images in JPEG (\*.jpg) format.

ASTER/MODIS Airborne Simulator Browse Imagery  
GEMx Campaign – 26 Sep 2023  
California/Arizona Border(GEMx AZ106)  
Flight #23-919-00 Track #6



Upper Left Lat, Lon = 32.7°, -114.5°  
Lower Right Lat, Lon = 32.3°, -114.1°  
Aircraft Heading = 176.0°  
Solar Zenith = 34.1°  
GPS Altitude = 20183. m (MSL)

Figure 1. Single band images and an RGB composite image from flight track 6 acquired on 26 September 2023 southeast of Yuma, Arizona, US (approx. 32.511 lat, -114.299 lon). Source: MASTERL1B\_2391900\_06\_20230926\_1941\_1944\_V01.jpg

## Citation

Hook, S.J., J.S. Myers, K.J. Thome, M. Fitzgerald, A.B. Kahle, Airborne Sensor Facility NASA Ames Research Center, and R.F. Kokaly. 2024. MASTER: Geological Earth Mapping Experiment (GEMx), California-Arizona, Summer 2023. ORNL DAAC, Oak Ridge, Tennessee, USA. <https://doi.org/10.3334/ORNLDAAC/2319>

## Table of Contents

- [1. Dataset Overview](#)
- [2. Data Characteristics](#)
- [3. Application and Derivation](#)
- [4. Quality Assessment](#)
- [5. Data Acquisition, Materials, and Methods](#)
- [6. Data Access](#)
- [7. References](#)

## 1. Dataset Overview

This dataset includes Level 1B (L1B) and Level 2 (L2) data products from the MODIS/ASTER Airborne Simulator (MASTER) instrument. The spectral data were collected during 13 flights aboard a NASA ER-2 aircraft over California, Oregon, Nevada, and Arizona, US, from 2023-04-25 to 2023-09-26. Data products include L1B georeferenced multispectral imagery of calibrated radiance in 50 bands covering wavelengths of 0.460 to 12.879 micrometers at approximately 50-meter spatial resolution. Derived L2 data products are emissivity in five bands in thermal infrared range (8.58 to 12.13 micrometers) and land surface temperature. The L1B file format is HDF-4, and L2 products are provided in ENVI and KMZ formats. In addition, the dataset includes the flight path, spectral band information, instrument configuration, ancillary notes, and summary information for each flight, and browse images derived from each L1B data file.

The Geological Earth Mapping Experiment (GEMx) research project used NASA's Airborne Visible/Infrared Imaging Spectrometer (AVIRIS), Hyperspectral Thermal Emission Spectrometer (HyTES), and MODIS/ASTER Airborne Simulator (MASTER) instruments to collect the measurements over the country's arid and semi-arid regions, including parts of California, Nevada, Arizona, and New Mexico, to map portions of southwest US for critical minerals.

The MASTER instrument is a modified Daedalus Wildfire scanning spectrometer that flies on a variety of multi-altitude research aircraft and provides spectral information similar to that provided by the Moderate Resolution Imaging Spectroradiometer (MODIS) and the Advanced Spaceborne Thermal Emission and Reflection Radiometer (ASTER), which are aboard two NASA Earth Observing System satellites: Terra and Aqua. MASTER provides data in 50 channels spanning visible to thermal infrared wavelengths (0.4 – 13  $\mu\text{m}$ ). Its data have been used to study geological patterns, land covers, ecological disturbances, and other phenomena that affect Earth surface properties.

**Project:** [MODIS/ASTER Airborne Simulator](#)

The MODIS/ASTER Airborne Simulator (MASTER) is a scanning spectrometer which flies on a variety of multi-altitude research aircraft and provides data similar to the Moderate Resolution Imaging Spectroradiometer (MODIS) and the Advanced Spaceborne Thermal Emission and Reflection Radiometer (ASTER). MASTER first flew in 1998 and has ongoing deployments as a Facility Instrument in the NASA Airborne Science Program (ASP). MASTER is a joint project involving the Airborne Sensor Facility (ASF) at the Ames Research Center, the Jet Propulsion Laboratory (JPL), and the Earth Resources Observation and Science Center (EROS).

### Related Publication

Hook, S.J. Myers, J.J., Thome, K.J., Fitzgerald, M. and A.B. Kahle. 2001. The MODIS/ASTER airborne simulator (MASTER) - a new instrument for earth science studies. *Remote Sensing of Environment* 76:93–102. [https://doi.org/10.1016/S0034-4257\(00\)00195-4](https://doi.org/10.1016/S0034-4257(00)00195-4)

### Related Datasets

Additional MASTER datasets are available on the ORNL DAAC [MASTER](#) project page

### Acknowledgments

The MASTER instrument is maintained and operated by the Airborne Sensor Facility (ASF) at NASA Ames Research Center in Mountain View, California, under the oversight of the EOS Project Science Office at NASA Goddard. Data processing was conducted at NASA Ames Research Center and the Jet Propulsion Laboratory at the California Institute of Technology in Pasadena, California.

## 2. Data Characteristics

**Spatial Coverage:** Portions of California, Nevada, Oregon, and Arizona, U.S.

**Spatial Resolution:** 50 m

**Temporal Coverage:** 2023-04-25 to 2023-09-26

**Temporal Resolution:** One-time estimate

**Study Area:** All latitudes and longitudes given in decimal degrees.

Site	Westernmost Longitude	Easternmost Longitude	Northernmost Latitude	Southernmost Latitude
California, Nevada, Oregon, and Arizona, U.S.	-129.375	-112.500	45.090	31.865

### Data File Information

This dataset includes a total of 993 data files: 120 files in Hierarchical Data Format (HDF-4; \*.hdf) format, 202 files in Keyhole Markup Language Zipped (KMZ; \*.kmz) format, 101 Portable Network Graphics (PNG; \*.png) files that are compressed (\*.zip), 32 text (\*.txt) files, 1 archives of text files that are zipped (\*.zip), 13 flight maps as GIF (\*.gif) images, and 120 browse images in JPEG (\*.jpg) format.

There are different numbers of each type of file, which corresponds to the number of "flights" and "flight tracks. A "flight" is flown on a single day, and a "flight track" typically refers to a segment of a given flight. The number of flight tracks varies among flights (Table 2).

- There are 13 flights with 120 flight tracks (Table 2).
- For each of 120 flight tracks, there is one L1B data file in HDF format and an auxiliary browse image (\*.jpg).
- L2 data are included for 101 of the 120 flight tracks. For each track, there are five L2 data files in ZIP format.
  - Four of the ZIP files contain L2 ENVI data for emissivity, land surface temperature, geographic coordinates, and quality assurance status. Each ZIP includes a binary data file (\*.dat) and its header file (\*.hdr).
  - One ZIP file contains three L2 PNG files: RGB composite, single-band emissivity, and land surface temperature.
  - L1B RGB composite images (\*RGB.kmz) and L2 land surface temperature (\*LST.kmz) in KMZ format.
- For each flight, there is a collection of auxiliary files providing information about the flight and instrument configuration.

The primary data files are named MASTERLAA\_BBBBBBBB\_CC\_YYYYMMDD\_EEFF\_GGHH\_V0J-X.ext (e.g., MASTERL1B\_2364900\_01\_20230425\_1733\_1751\_V02.hdf).

The flight track-level browse images are named MASTERLAA\_BBBBBBBB\_CC\_YYYYMMDD\_EEFF\_GGHH\_V0J.jpg (e.g., MASTERL1B\_2364900\_01\_20230425\_1733\_1751\_V02.jpg).

The deployment-level auxiliary files are named MASTER\_BBBBBBBB\_YYYYMMDD\_X.ext (e.g., MASTER\_2364900\_20230425\_config.txt).

- AA = "1B" or "2", indicating L1B or L2 data level,
- BBBBBBBB = flight number (Table 2),
- CC = flight track (Table 2),
- YYYYMMDD = date of sampling,
- EEFF = starting time at EE hour and FF minute,
- GGHH = ending time at GG hour and HH minute,
- J = version number for file,
- X = the file content (see Table 1), and
- ext = "hdf", "kmz", "gif", "jpg", "txt", or "zip", indicating the file extension.

**User Note:** Some file names have "GEMX" included before the *file content* portion of the name.

**Table 1.** File names and descriptions.

File Name	Level	File Type	Total Files	Description
<b>Primary Data Files</b>				
MASTERL1B_BBBBBBBB_CC_YYYYmmDD_EEFF_GGHH_V0J.hdf	L1B	HDF-4	120	Multispectral radiance in 50 bands, pixel coordinates, sensor configuration, aircraft platform data, analysis parameters. The "CalibratedData" variable provides estimates of radiance in units of $W\ m^{-2}\ sr^{-1}$ per micron.
MASTERL1B_BBBBBBBB_CC_YYYYmmDD_EEFF_GGHHV0J-RGB.kmz	L1B	KMZ	101	RGB composite browse image (in KMZ format) derived from corresponding bands of RGB wavelengths of L1B data.
MASTERL2_BBBBBBBB_CC_YYYYmmDD_EEFF_GGHH_V0J-emissivity_tes.zip	L2	ENVI	101	Map of atmospheric corrected emissivity; Temperature and Emissivity Separation (TES) corrected data in 5 bands (wavelengths: 8.58, 9.02, 10.62, 11.32, and 12.13 $\mu m$ ).
MASTERL2_BBBBBBBB_CC_YYYYmmDD_EEFF_GGHH_V0J-images.zip	L2	PNG	101	Three non-georeferenced images depicting (a) RGB composite using selected bands, (b) emissivity from a single band, and (c) land surface temperature.
MASTERL2_BBBBBBBB_CC_YYYYmmDD_EEFF_GGHH_V0J-location.zip	L2	ENVI	101	Latitude and longitude coordinates for pixels in ENVI files.
MASTERL2_BBBBBBBB_CC_YYYYmmDD_EEFF_GGHH_V0J-LST.kmz	L2	KMZ	101	Map of land surface temperature in degrees Kelvin.
MASTERL2_BBBBBBBB_CC_YYYYmmDD_EEFF_GGHH_V0J-QAmap.zip	L2	ENVI	101	QA status for each pixel from TES algorithm, where 1 = divergence and 0 = convergence.
MASTERL2_BBBBBBBB_CC_YYYYmmDD_EEFF_GGHH_V0J-surface_temp.zip	L2	ENVI	101	Map of land surface temperature (TES LST) in degrees Kelvin.
<b>Auxiliary Files</b>				
MASTERL1B_BBBBBBBB_CC_YYYYMMDD_EEFF_GGHH_V0J.jpg	L1B	JPEG	120	Browse figures; one image per flight track; multiple tracks per flight.
MASTER_BBBBBBBB_YYYYMMDD_ancillary.txt	-	Text	1	Ancillary information about flight including notes on aircraft platform, mission objective, and data evaluation.
MASTER_BBBBBBBB_YYYYMMDD_config.txt	-	Text	16	Instrument configuration information for flight.
MASTER_BBBBBBBB_YYYYMMDD_flightpath.gif	-	GIF	13	Map showing flight paths.
MASTER_BBBBBBBB_YYYYMMDD_spectral_band_info.txt	-	Text	1	Spectral band information for flight.
MASTER_BBBBBBBB_YYYYMMDD_spectral_response_table.zip	-	Text	1	Spectral response tables by band (ZIP archive of 50 text files).

File Name	Level	File Type	Total Files	Description
MASTER_BBBBBBBB_YYYYMMDD_summary.txt	-	Text	14	Time and coordinates for start and end of flight tracks along with the number of scan lines, solar and instrument angles, and aircraft altitude. FTLT = flight track number.

#### Data File Details

The HDF-4 files contain swath trajectory data using longitude, latitude coordinates. The spatial resolution is function of aircraft altitude. Resolution is approximately 50 m for these ER-2 flights.

**Table 2.** Number of flight tracks for each MASTER flight during this 2023 deployment over California, Nevada, Oregon, and Arizona.

Date	Flight Number	Locations (USA)	Flight Tracks		
			Data Level	L1B	L2
2023-04-25	2364900	Southeastern California (GEMx CA09)		12	10
2023-04-28	2365200	California / Arizona (GEMx TY03)		6	6
2023-08-28	2390900	Ivanpah Playa		7	7
2023-09-05	2391000	Lake Tahoe		12	11
2023-09-11	2391100	Central California (GEMx CA214)		2	1
2023-09-12	2391200	Central California (GEMx CA225)		13	9
2023-09-14	2391300	Northwestern California (GEMx TY406)		2	2
2023-09-15	2391400	Northwestern California (GEMx TY406)		10	10
2023-09-18	2391500	California/Nevada Border (GEMx CA285)		13	13
2023-09-19	2391600	California/Nevada Border (GEMx TY211)		10	10
2023-09-20	2391700	Lake Tahoe		12	12
2023-09-25	2391800	California/Arizona (GEMx TY103)		10	0
2023-09-26	2391900	California/Arizona Border(GEMx TY101)		11	10
Total				120	101

### 3. Application and Derivation

The primary objective of MASTER is to: (a) collect ASTER-like and MODIS-like land datasets to support the validation of the ASTER and MODIS geophysical retrieval algorithms; (b) collect these datasets at a higher resolution than the spaceborne datasets to permit scaling studies and comparisons with in-situ measurements; and (c) under fly the EOS-AM1 ASTER and MODIS sensors to provide an additional radiometric calibration to assist with in-flight instrument performance characterization. Calibration is particularly important for ASTER where on-board calibration is dependent on a single black body in the TIR and only partial aperture illumination in the VNIR.

A secondary objective of MASTER is to: (a) provide both a backup instrument and backup modules for the current MODIS Airborne simulator, which is committed to a program of atmospheric and oceanic measurements; and (b) provide a wider spectral and dynamic range alternative to the use of the Thematic Mapper (TM) airborne simulator and Thermal Infrared Multispectral Scanner (TIMS) airborne scanners (JPL, 2021b).

MASTER imagery has been used for mapping wildfires and their impacts (Veraverbeke et al., 2011), land covers (Li and Moon, 2004), coral reefs (Capolsini et al., 2003), and urban heat islands (Zhao and Wentz, 2016).

The Geological Earth Mapping Experiment (GEMx) research project will use NASA's Airborne Visible/Infrared Imaging Spectrometer (AVIRIS), Hyperspectral Thermal Emission Spectrometer (HyTES), and MODIS/ASTER Airborne Simulator (MASTER) instruments to collect the measurements over the country's arid and semi-arid regions, including parts of California, Nevada, Arizona, and New Mexico, to map portions of southwest US for critical minerals.

### 4. Quality Assessment

The MASTER instrument channels are calibrated spectrally and radiometrically in the laboratory preflight and postflight. The mid-infrared and thermal infrared channels (26–50) are also radiometrically calibrated in-flight by viewing an internal hot and cold blackbody with each scanline (Hook et al., 2001). Three calibration and validation experiments were conducted in 1998–2001 (Hook et al., 2001; JPL, 2021a). Spectral response information for this deployment is included in the MASTER\_BBBBBBBB\_YYYYMMDD\_spectral\_response\_table.zip files.

### 5. Data Acquisition, Materials, and Methods

The MASTER instrument was developed by the NASA Ames Research Center in conjunction with the Jet Propulsion Laboratory. The instrument consists of three key components: the scanning spectrometer, the digitizer, and the storage system. The scanning unit was built by Sensys Technology (formerly Daedalus Enterprises) and the digitizer was a collaborative effort between Berkeley Camera Engineering and the Ames Airborne Sensor Facility (ASF). The data storage system and overall system integration were also provided by the ASF.

The MASTER instrument is similar to the MODIS Airborne Simulator (MAS) developed by the MODIS project (King et al., 1996). However, it has two key differences. First, MASTER supports a variety of scan speeds allowing it to acquire contiguous imagery from a variety of altitudes with different pixel sizes.

Second, the channel positions are configured to closely match those of ASTER and MODIS. A detailed description of the instrument and optical system are provided by Hook et al. (2001) and King et al. (1996), respectively.

For this deployment, the MASTER instrument was flown on NASA's ER-2 aircraft at altitudes of 19,490 - 20,875 m above sea level.

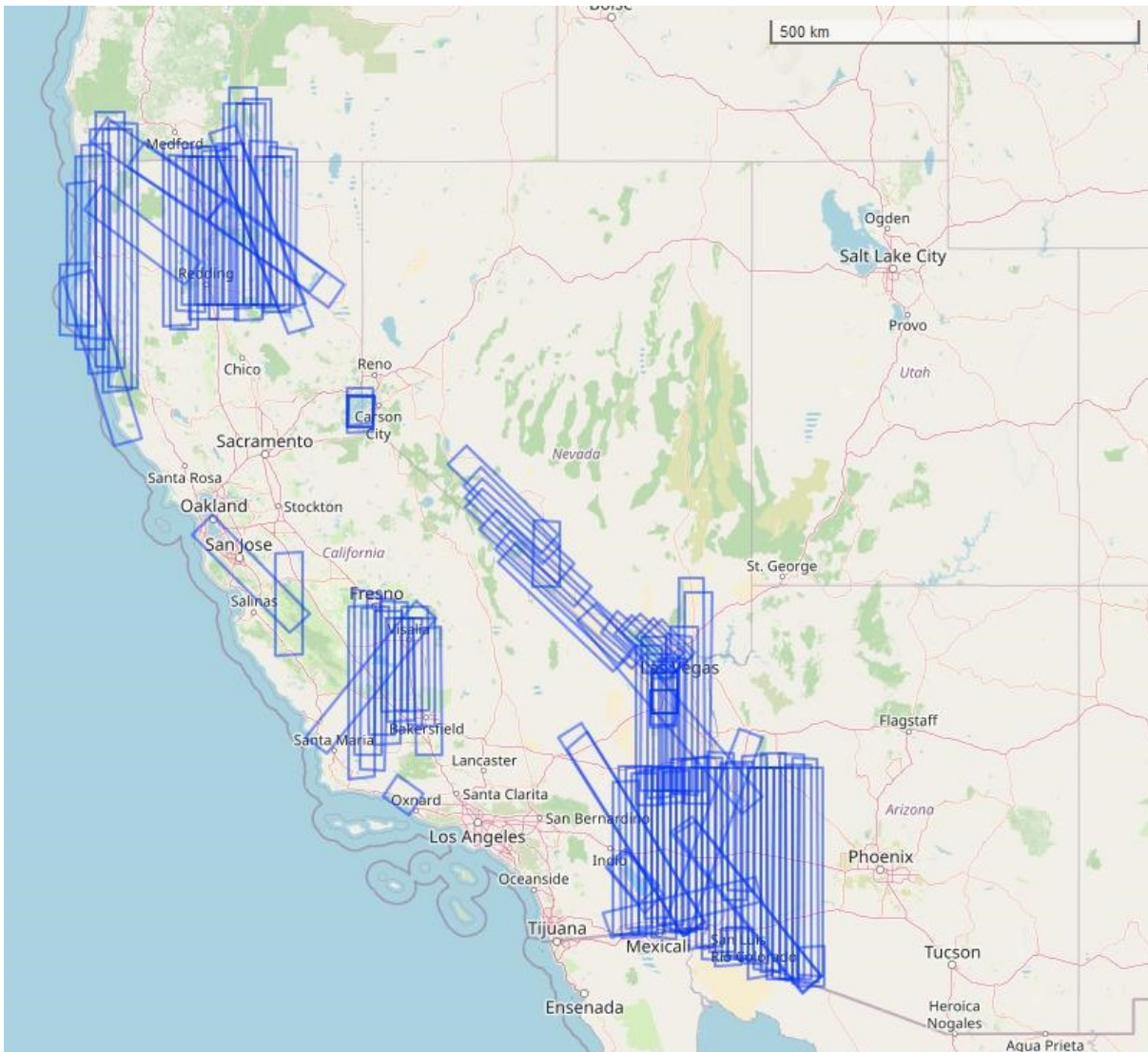


Figure 2. Flight tracks in this dataset represented as blue rectangular polygons over California, Oregon, Nevada, and Arizona. Basemap: © OpenStreetMap contributors.



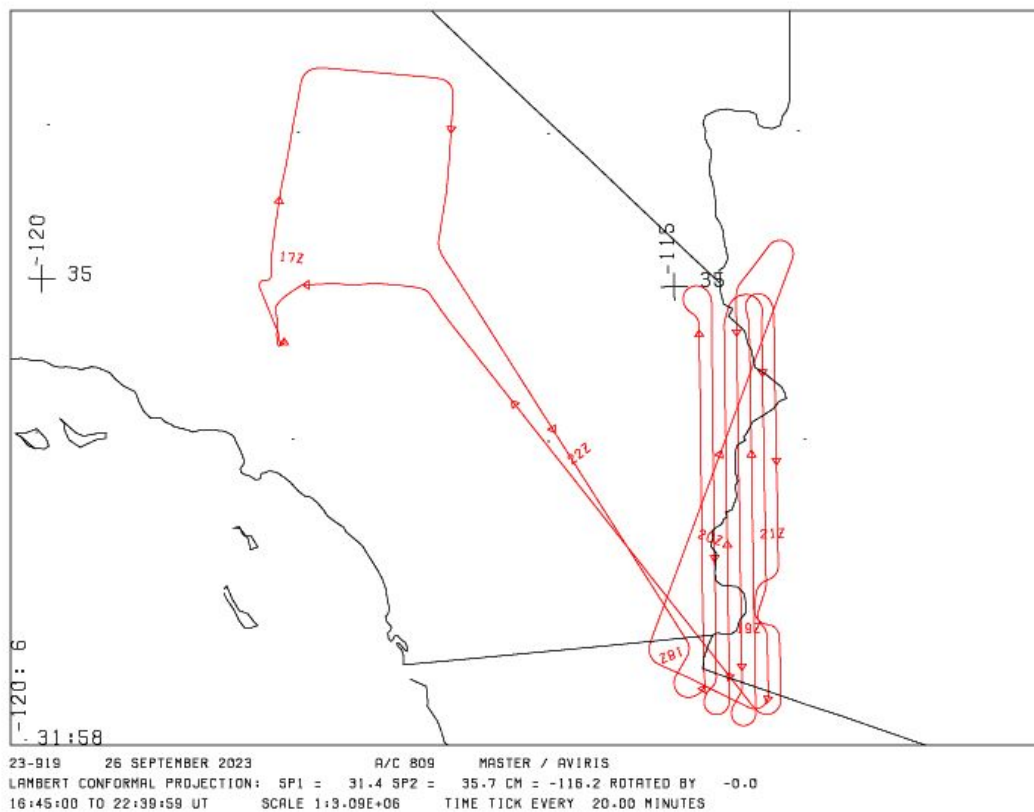


Figure 3. Typical flight path is shown for 26 September 2023. Flight 2391900 and 11 flight tracks occurred over southern California and Arizona. Source: MASTERL1B\_2391900\_06\_20230926\_1941\_1944\_V01.gif

## 6. Data Access

These data are available through the Oak Ridge National Laboratory (ORNL) Distributed Active Archive Center (DAAC).

[MASTER: Geological Earth Mapping Experiment \(GEMx\), California-Arizona, Summer 2023](#)

Contact for Data Center Access Information:

- E-mail: [uso@daac.ornl.gov](mailto:uso@daac.ornl.gov)
- Telephone: +1 (865) 241-3952

## 7. References

- Capolsini, P., S. Andréfouët, C. Rion, and C. Payri. 2003. A comparison of Landsat ETM+, SPOT HRV, Ikonos, ASTER, and airborne MASTER data for coral reef habitat mapping in South Pacific islands. *Canadian J. Remote Sensing* 29:187-200. <https://doi.org/10.5589/m02-088>
- Coll, C., V. Caselles, E. Rubio, F. Sospedra, and E. Valor. 2001. Temperature and emissivity separation from calibrated data of the Digital Airborne Imaging Spectrometer. *Remote Sensing of Environment* 76:250-259. [https://doi.org/10.1016/S0034-4257\(00\)00207-8](https://doi.org/10.1016/S0034-4257(00)00207-8)
- Hook, S.J. Myers, J.J., Thome, K.J., Fitzgerald, M., and A.B. Kahle. 2001. The MODIS/ASTER airborne simulator (MASTER) - a new instrument for earth science studies. *Remote Sensing of Environment* 76:93-102. [https://doi.org/10.1016/S0034-4257\(00\)00195-4](https://doi.org/10.1016/S0034-4257(00)00195-4)
- JPL. 2021a. Calibration and Validation, MASTER: MODIS/ASTER Airborne Simulator. Jet Propulsion Laboratory, California Institute of Technology, Pasadena, California, USA. <https://masterprojects.jpl.nasa.gov/cal-val>
- JPL. 2021b. Science objectives, MASTER: MODIS/ASTER Airborne Simulator. Jet Propulsion Laboratory, California Institute of Technology, Pasadena, California, USA. <https://masterprojects.jpl.nasa.gov/objectives>
- King, M.D., W.P. Menzel, P.S. Grant, J.S. Myers, G.T. Arnold, S.E. Platnick, L.E. Gumley, S.C. Tsay, C.C. Moeller, M. Fitzgerald, K.S. Brown, and F.G. Osterwisch. 1996. Airborne scanning spectrometer for remote sensing of cloud, aerosol, water vapor and surface properties. *J. Atmospheric and Oceanic Technology* 13:777-794. [https://doi.org/10.1175/1520-0426\(1996\)013<0777:ASSFRS>2.0.CO;2](https://doi.org/10.1175/1520-0426(1996)013<0777:ASSFRS>2.0.CO;2)
- Li, P., and W.M. Moon. 2004. Land cover classification using MODIS-ASTER airborne simulator (MASTER) data and NDVI: A case study of the Kochang area, Korea. *Canadian J. Remote Sensing* 30:123-126. <https://doi.org/10.5589/m03-061>
- Veraverbeke, S., S. Harris, and S. Hook. 2011. Evaluating spectral indices for burned area discrimination using MODIS/ASTER (MASTER) airborne simulator data. *Remote Sensing of Environment* 115:2702-2709. <https://doi.org/10.1016/j.rse.2011.06.010>
- Zhao, Q., and E.A. Wentz. 2016. A MODIS/ASTER Airborne Simulator (MASTER) imagery for urban heat island research. *Data* 1:7. <https://doi.org/10.3390/data1010007>



**Home**

**About Us**

- Mission
- Data Use and Citation Policy
- User Working Group
- Partners

**Get Data**

- Science Themes
- NASA Projects
- All Datasets

**Submit Data**

- Submit Data Form
- Data Scope and Acceptance
- Data Authorship Policy
- Data Publication Timeline
- Detailed Submission Guidelines

**Tools**

- TESVIS
- THREDDS
- SDAT
- Daymet
- Airborne Data Visualizer
- Soil Moisture Visualizer

**Resources**

- Learning
- Data Management
- News

**Help**

- Earthdata Forum [↗](#)
- Email Us [✉](#)

