

in

[DAAC Home](#) > [Get Data](#) > [NASA Projects](#) > [MODIS/ASTER Airborne Simulator \(MASTER\)](#) > [User guide](#)

MASTER: Airborne Science, Southwestern US, September, 2002

Get Data

Documentation Revision Date: 2023-04-13

Dataset Version: 1

Summary

This dataset includes Level 1B (L1B) and Level 2 (L2) data products from the MODIS/ASTER Airborne Simulator (MASTER) instrument. The spectral data were collected during 11 flights aboard a NASA ER-2 aircraft over southwestern U.S. from 2002-09-10 to 2002-09-26. This deployment was coordinated by NASA's Dryden Flight Research Center (DRFC), renamed Armstrong Flight Research Center in 2014, located in Edwards, California. Data products include L1B georeferenced multispectral imagery of calibrated radiance in 50 bands covering wavelengths of 0.460 to 12.879 micrometers at approximately 50-meter spatial resolution. Derived L2 data products are emissivity in 5 bands in thermal infrared range (8.58 to 12.13 micrometers) and land surface temperature. The L1B file format is HDF-4, and L2 products are provided in ENVI and KMZ formats. In addition, the dataset includes flight paths, spectral band information, instrument configuration, ancillary notes, and summary information for each flight, and browse images derived from each L1B data file.

The MASTER instrument is a modified Daedalus Wildfire scanning spectrometer that flies on a variety of multi-altitude research aircraft and provides spectral information similar to that provided by the Moderate Resolution Imaging Spectroradiometer (MODIS) and the Advanced Spaceborne Thermal Emission and Reflection Radiometer (ASTER), which are aboard two NASA Earth Observing System satellites: Terra and Aqua. MASTER provides data in 50 channels spanning visible to thermal infrared wavelengths (0.4 – 13 μm). Its data have been used to study geological patterns, land covers, ecological disturbances, and other phenomena that affect Earth surface properties.

This dataset includes a total of 234 data files: 45 files in Hierarchical Data Format (HDF-4; *.hdf) format, 84 ENVI raster files (*.dat and *.hdr) that are compressed (*.zip), 21 files in Keyhole Markup Language Zipped (KMZ; *.kmz) format, 21 Portable Network Graphics (PNG; *.png) files that are compressed (*.zip), 12 text (*.txt) files, 3 archives of text files that are zipped (*.zip), 3 flight maps as GIF (*.gif) images, and 45 browse images in JPEG (*.jpg) format.

ASTER/MODIS Airborne Simulator Browse Imagery
 DFRC_Sept02 Campaign – 10 Sep 2002
 Mono Lake, CA
 Flight #02-971-00 Track #4

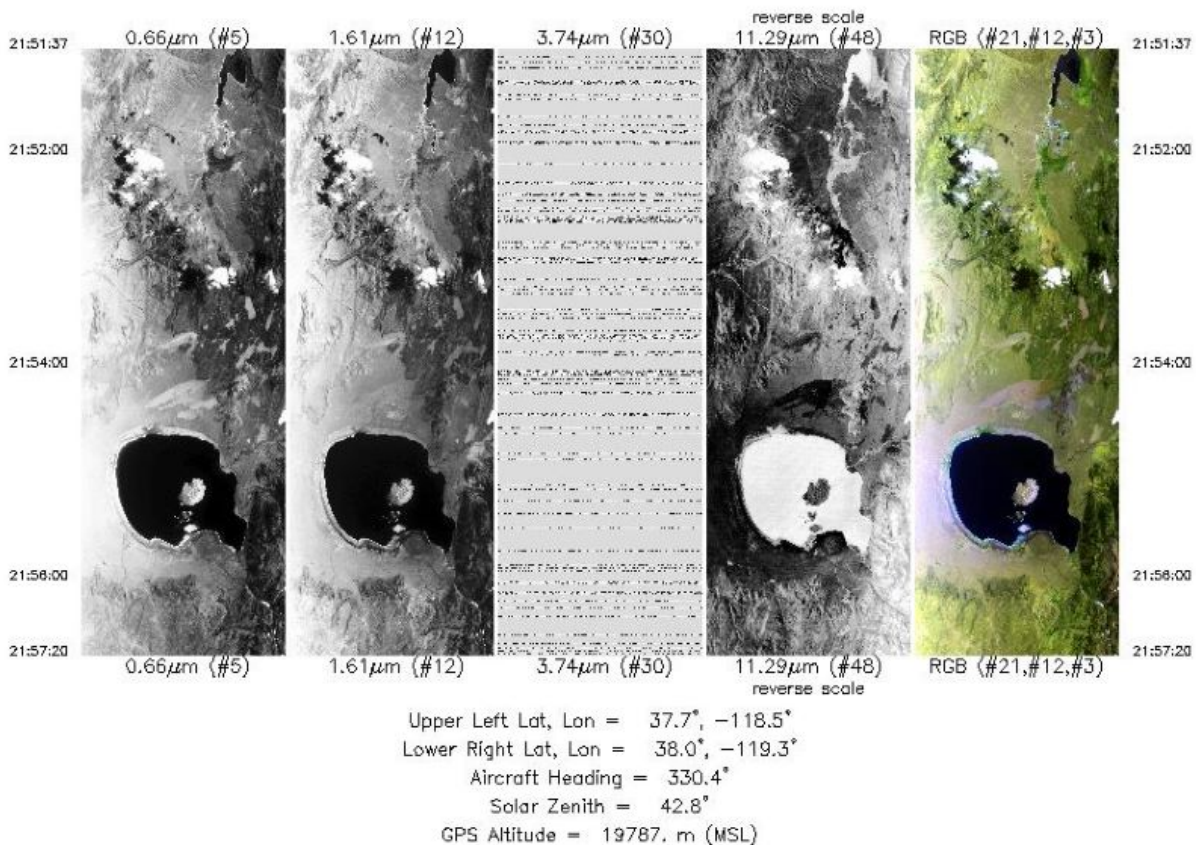


Figure 1. Single-band images and a RGB composite image from flight track 4 as acquired on 10 September 2002 over Mono Lake, California, U.S.
 Source: MASTERL1B_0297100_04_20020910_2151_2157_V01.jpg

Citation

Hook, S.J., J.S. Myers, K.J. Thome, M. Fitzgerald, A.B. Kahle, Airborne Sensor Facility NASA Ames Research Center, and T.H. Mace. 2022. MASTER: Airborne Science, Southwestern US, September, 2002. ORNL DAAC, Oak Ridge, Tennessee, USA. <https://doi.org/10.3334/ORNLDAAC/2064>

Table of Contents

1. Dataset Overview
2. Data Characteristics
3. Application and Derivation
4. Quality Assessment
5. Data Acquisition, Materials, and Methods
6. Data Access
7. References

1. Dataset Overview

This dataset includes Level 1B (L1B) and Level 2 (L2) data products from the MODIS/ASTER Airborne Simulator (MASTER) instrument. The spectral data were collected during 11 flights aboard a NASA ER-2 aircraft over southwestern U.S. from 2002-09-10 to 2002-09-26. This deployment was coordinated by NASA's Dryden Flight Research Center (DFRC), renamed Armstrong Flight Research Center in 2014, located in Edwards, California. Data products include L1B georeferenced multispectral imagery of calibrated radiance in 50 bands covering wavelengths of 0.460 to 12.879 micrometers at approximately 50-meter spatial resolution. Derived L2 data products are emissivity in 5 bands in thermal infrared range (8.58 to 12.13 micrometers) and land surface temperature. The L1B file format is HDF-4, and L2 products are provided in ENVI and KMZ formats. In addition, the dataset includes flight paths, spectral band information, instrument configuration, ancillary notes, and summary information for each flight, and browse images derived from each L1B data file.

The MASTER instrument is a modified Daedalus Wildfire scanning spectrometer that flies on a variety of multi-altitude research aircraft and provides spectral information similar to that provided by the Moderate Resolution Imaging Spectroradiometer (MODIS) and the Advanced Spaceborne Thermal Emission and Reflection Radiometer (ASTER), which are aboard two NASA Earth Observing System satellites: Terra and Aqua. MASTER provides data in 50 channels spanning visible to thermal infrared wavelengths (0.4 – 13 µm). Its data have been used to study geological patterns, land covers, ecological disturbances, and other phenomena that affect Earth surface properties.

Project: [MODIS/ASTER Airborne Simulator](#)

The MODIS/ASTER Airborne Simulator (MASTER) is a scanning spectrometer which flies on a variety of multi-altitude research aircraft and provides data similar to the Moderate Resolution Imaging Spectroradiometer (MODIS) and the Advanced Spaceborne Thermal Emission and Reflection Radiometer

(ASTER). MASTER first flew in 1998 and has ongoing deployments as a Facility Instrument in the NASA Airborne Science Program (ASP). MASTER is a joint project involving the Airborne Sensor Facility (ASF) at the Ames Research Center, the Jet Propulsion Laboratory (JPL), and the Earth Resources Observation and Science Center (EROS).

Related Publication

Hook, S.J. Myers, J.J., Thome, K.J., Fitzgerald, M. and A.B. Kahle. 2001. The MODIS/ASTER airborne simulator (MASTER) - a new instrument for earth science studies. *Remote Sensing of Environment* 76:93–102. [https://doi.org/10.1016/S0034-4257\(00\)00195-4](https://doi.org/10.1016/S0034-4257(00)00195-4)

Related Datasets

Additional MASTER datasets are available on the ORNL DAAC [MASTER](#) project page

Acknowledgments

The MASTER instrument is maintained and operated by the Airborne Sensor Facility (ASF) at NASA Ames Research Center in Mountain View, California, under the oversight of the EOS Project Science Office at NASA Goddard. Data processing was conducted at NASA Ames Research Center and the Jet Propulsion Laboratory at the California Institute of Technology in Pasadena, California.

2. Data Characteristics

Spatial Coverage: Portions of California, Nevada, Arizona, New Mexico. Texas, and Oklahoma, U.S.

Spatial Resolution: 50 m

Temporal Coverage: 2002-09-10 to 2002-09-26

Temporal Resolution: One-time estimate

Study Area: All latitudes and longitudes given in decimal degrees.

Site	Westernmost Longitude	Easternmost Longitude	Northernmost Latitude	Southernmost Latitude
southwestern U.S.	-123.750	-95.852	40.980	28.969

Data File Information

This dataset includes a total of 234 data files: 45 files in Hierarchical Data Format (HDF-4; *.hdf) format, 84 ENVI raster files (*.dat and *.hdr) that are compressed (*.zip), 21 files in Keyhole Markup Language Zipped (KMZ; *.kmz) format, 21 Portable Network Graphics (PNG; *.png) files that are compressed (*.zip), 12 text (*.txt) files, 3 archives of text files that are zipped (*.zip), 3 flight maps as GIF (*.gif) images, and 45 browse images in JPEG (*.jpg) format.

There are different numbers of each type of file, which corresponds to the number of "flights" and "flight tracks. A "flight" is flown on a single day, and a "flight track" typically refers to a segment of a given flight. The number of flight tracks varies among flights (Table 2).

- There are three flights, which include 45 flight tracks (Table 2).
- For each of 45 flight tracks, there is one L1B data file in HDF format and one auxiliary browse image (*.jpg).
- L2 data are included for 21 of the 45 flight tracks. For each track, there is one KMZ file derived from L1B data and five L2 data files in ZIP format.
 - Four of the ZIP files contain L2 ENVI data for emissivity, land surface temperature, geographic coordinates, and quality assurance status. Each ZIP includes a binary data file (*.dat) and its header file (*.hdr).
 - One ZIP file contains three L2 PNG files: RGB composite, single-band emissivity, and land surface temperature.
- For each flight, there is a collection of auxiliary files providing information about the flight and instrument configuration.

The primary data files are named MASTERLAA_BBBBBBBB_CC_YYYYMMDD_EEFF_GGHH_V0J-X.ext (e.g., MASTERL1B_0297100_01_20020910_2118_2126_V01.hdf).

The flight track-level browse images are named MASTERLAA_BBBBBBBB_CC_YYYYMMDD_EEFF_GGHH_V0J.jpg (e.g., MASTERL1B_0297100_01_20020910_2118_2126_V01.jpg).

The deployment-level auxiliary files are named MASTER_BBBBBBBB_YYYYMMDD_X.ext (e.g., MASTER_0297100_20020910_config.txt).

- AA = "1B" or "2", indicating L1B or L2 data level,
- BBBBBBBB = flight number (Table 2),
- CC = flight track (Table 2),
- YYYYMMDD = date of sampling,
- EEFF = starting time at EE hour and FF minute,
- GGHH = ending time at GG hour and HH minute,
- J = version number for file,
- X = the file content (see Table 1), and
- ext = ".hdf", ".kmz", ".gif", ".jpg", ".txt", or ".zip", indicating the file extension.

Table 1. File names and descriptions.

File Name	Level	File Type	Total Files	Description
Primary Data Files				
MASTERL1B_BBBBBBBB_CC_YYYYmmDD_EEFF_GGHH_V0J.hdf	L1B	HDF-4	45	Multispectral radiance in 50 bands, pixel coordinates, sensor configuration, aircraft platform data, analysis parameters. The "CalibratedData" variable provides estimates of radiance in units of $W\ m^{-2}\ sr^{-1}$ per micron.

File Name	Level	File Type	Total Files	Description
MASTERL1B_BBBBBBBB_CC_YYYYmmDD_EEFF_GGHH_V0J-RGB.kmz	L1B	KMZ	21	RGB composite browse image (in KMZ format) derived from corresponding bands of RGB wavelengths of L1B data.
MASTERL2_BBBBBBBB_CC_YYYYmmDD_EEFF_GGHH_V0J-emissivity_tes.zip	L2	ENVI	21	Map of atmospheric corrected emissivity; Temperature and Emissivity Separation (TES) corrected data in 5 bands (wavelengths: 8.58, 9.02, 10.62, 11.32, and 12.13 μm).
MASTERL2_BBBBBBBB_CC_YYYYmmDD_EEFF_GGHH_V0J-images.zip	L2	PNG	21	Three non-georeferenced images depicting (a) RGB composite using selected bands, (b) emissivity from a single band, and (c) land surface temperature.
MASTERL2_BBBBBBBB_CC_YYYYmmDD_EEFF_GGHH_V0J-location.zip	L2	ENVI	21	Latitude and longitude coordinates for pixels in ENVI files.
MASTERL2_BBBBBBBB_CC_YYYYmmDD_EEFF_GGHH_V0J-QAmap.zip	L2	ENVI	21	QA status for each pixel from TES algorithm, where 1 = divergence and 0 = convergence.
MASTERL2_BBBBBBBB_CC_YYYYmmDD_EEFF_GGHH_V0J-surface_temp.zip	L2	ENVI	21	Map of land surface temperature (TES LST) in degrees Kelvin.
Auxiliary files				
MASTERLAA_BBBBBBBB_CC_YYYYMMDD_EEFF_GGHH_V0J.jpg	L1B	JPEG	45	Browse figures; one per flight track, multiple tracks per flight.
MASTER_BBBBBBBB_YYYYMMDD_ancillary.txt	-	Text	3	Ancillary information about flight including notes on aircraft platform, mission objective, and data evaluation.
MASTER_BBBBBBBB_YYYYMMDD_config.txt	-	Text	3	Instrument configuration information for flight.
MASTER_BBBBBBBB_YYYYMMDD_flightpath.gif	-	GIF	3	Map showing flight paths.
MASTER_BBBBBBBB_YYYYMMDD_spectral_band_info.txt	-	Text	3	Spectral band information.
MASTER_BBBBBBBB_YYYYMMDD_spectral_response_table.zip	-	Text	3	Spectral response tables by band (ZIP archive of 50 text files).
MASTER_BBBBBBBB_YYYYMMDD_summary.txt	-	Text	3	Time and coordinates for start and end of flight tracks along with the number of scan lines, solar and instrument angles, aircraft altitude, and additional information. FTLT = flight track number.

Data File Details

The HDF-4 and ENV files contain swath trajectory data using longitude, latitude coordinates. The spatial resolution is approximately 50 m and is a function of aircraft altitude.

Table 2. Number of flight tracks for each MASTER flight during this 2002 deployment over California (CA), Texas, Oklahoma, and other states in western US.

Date	Flight Number	Locations (USA)	Flight Tracks	
			Data Level	L2
2002-09-10	0297100	Death Valley, CA	9	9
2002-09-18	0297200	California, Arizona	24	1
2002-09-26	0297300	Owens Valley, CA	12	11
Total			45	21

3. Application and Derivation

The primary objective of MASTER is to: (a) collect ASTER-like and MODIS-like land datasets to support the validation of the ASTER and MODIS geophysical retrieval algorithms; (b) collect these datasets at a higher resolution than the spaceborne datasets to permit scaling studies and comparisons with in-situ measurements; and (c) under fly the EOS-AM1 ASTER and MODIS sensors to provide an additional radiometric calibration to assist with in-flight instrument performance characterization. Calibration is particularly important for ASTER where on-board calibration is dependent on a single black body in the TIR and only partial aperture illumination in the VNIR.

A secondary objective of MASTER is to: (a) provide both a backup instrument and backup modules for the current MODIS Airborne simulator, which is committed to a program of atmospheric and oceanic measurements; and (b) provide a wider spectral and dynamic range alternative to the use of the Thematic Mapper (TM) airborne simulator and Thermal Infrared Multispectral Scanner (TIMS) airborne scanners (JPL, 2021b).

MASTER imagery has been used for mapping wildfires and their impacts (Veraverbeke et al., 2011), land covers (Li and Moon, 2004), coral reefs (Capolsini et al., 2003), and urban heat islands (Zhao and Wentz, 2016).

4. Quality Assessment

The MASTER instrument channels are calibrated spectrally and radiometrically in the laboratory preflight and postflight. The mid-infrared and thermal infrared channels (26–50) are also radiometrically calibrated in-flight by viewing an internal hot and cold blackbody with each scanline (Hook et al., 2001). Three calibration and validation experiments were conducted in 1998–2001 (Hook et al., 2001; JPL, 2021a). Spectral response information for this deployment is included in the MASTER_BBBBBBBB_YYYYMMDD_spectral_response_table.zip files.

5. Data Acquisition, Materials, and Methods

The MASTER instrument was developed by the NASA Ames Research Center in conjunction with the Jet Propulsion Laboratory. The instrument consists of three key components: the scanning spectrometer, the digitizer, and the storage system. The scanning unit was built by Sensys Technology (formerly Daedalus Enterprises) and the digitizer was a collaborative effort between Berkeley Camera Engineering and the Ames Airborne Sensor Facility (ASF). The data storage system and overall system integration were also provided by the ASF.

The MASTER instrument is similar to the MODIS Airborne Simulator (MAS) developed by the MODIS project (King et al., 1996). However, it has two key differences. First, MASTER supports a variety of scan speeds allowing it to acquire contiguous imagery from a variety of altitudes with different pixel sizes. Second, the channel positions are configured to closely match those of ASTER and MODIS. A detailed description of the instrument and optical system are provided by Hook et al. (2001) and King et al. (1996), respectively.

For this deployment, the MASTER instrument was flown on NASA's ER-2 aircraft at altitudes of 19,540 - 19,875 m above sea level.

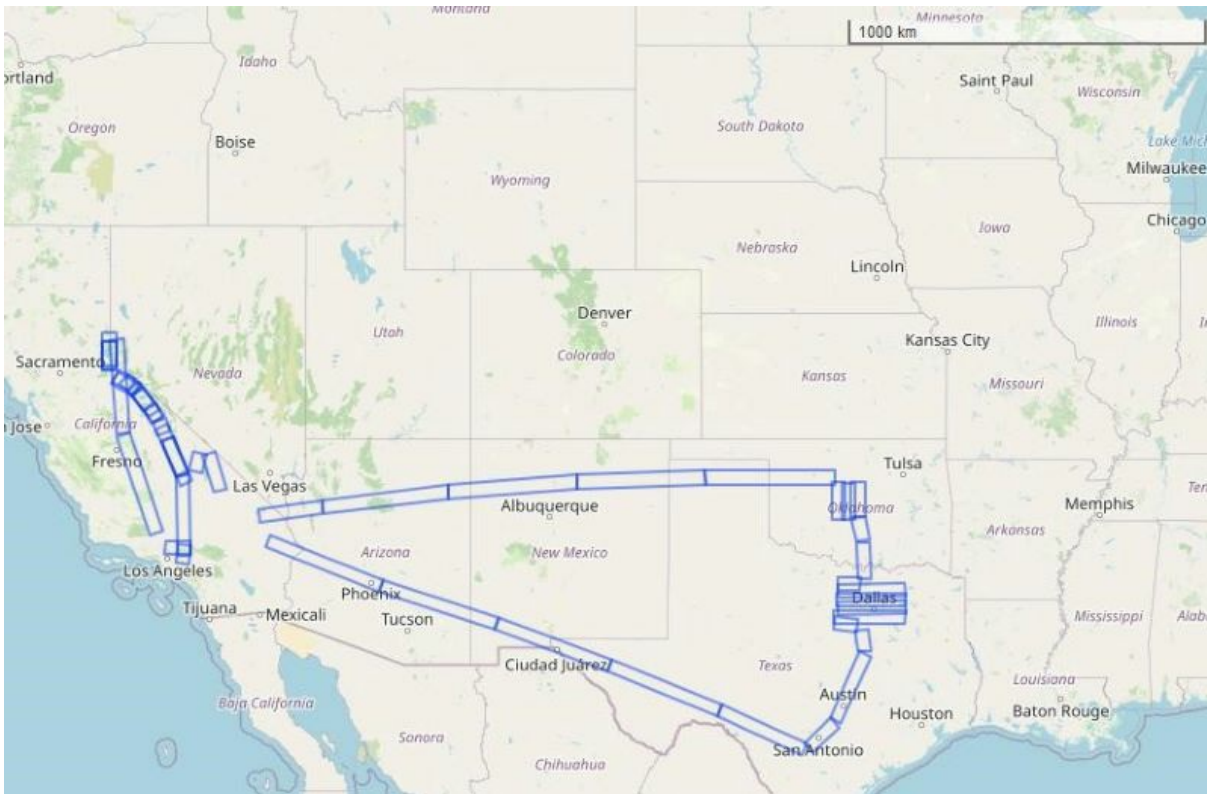


Figure 2. Flight tracks in this dataset represented as blue rectangular polygons. Basemap: © [OpenStreetMap](#) contributors.

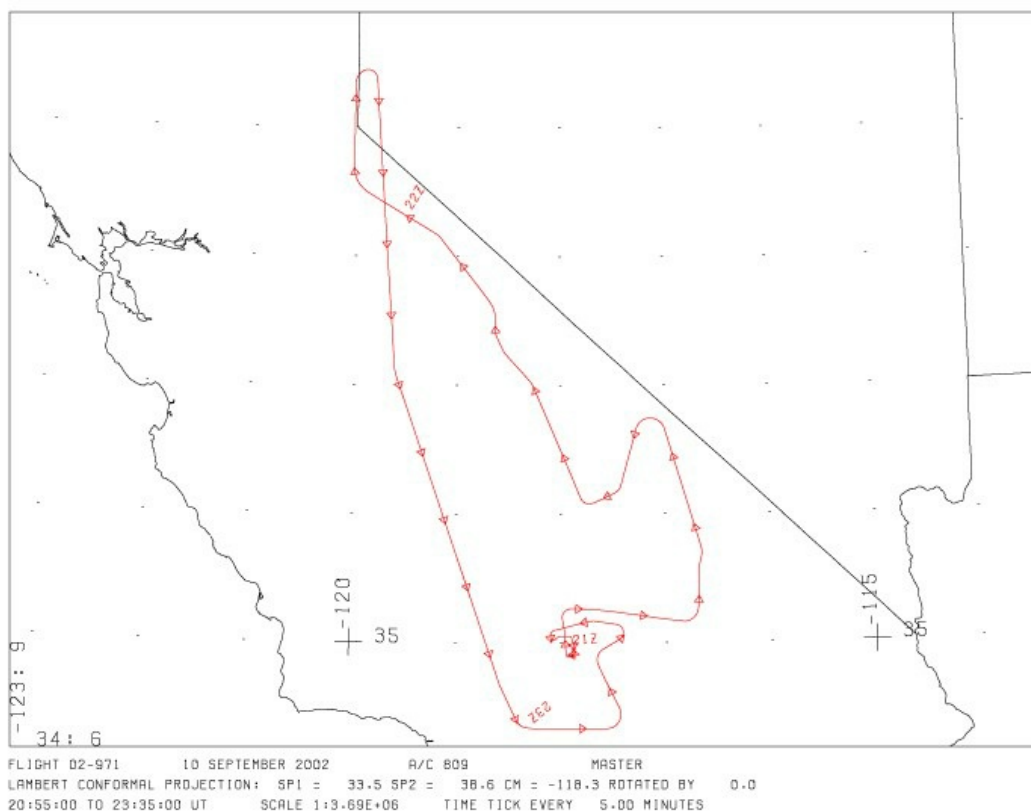


Figure 3. Typical flight path is shown for September 10, 2002 over southern California. Flight 0297100 and 9 flight tracks.
Source: MASTER_0297100_20020910_flightpath.gif

6. Data Access

These data are available through the Oak Ridge National Laboratory (ORNL) Distributed Active Archive Center (DAAC).

[MASTER: Airborne Science, Southwestern US, September, 2002](#)

Contact for Data Center Access Information:

- E-mail: uso@daac.ornl.gov
- Telephone: +1 (865) 241-3952

7. References

- Capolsini, P., S. Andréfouët, C. Rion, and C. Payri. 2003. A comparison of Landsat ETM+, SPOT HRV, Ikonos, ASTER, and airborne MASTER data for coral reef habitat mapping in South Pacific islands. *Canadian J. Remote Sensing* 29:187-200. <https://doi.org/10.5589/m02-088>
- Coll, C., V. Caselles, E. Rubio, F. Sospedra, and E. Valor. 2001. Temperature and emissivity separation from calibrated data of the Digital Airborne Imaging Spectrometer. *Remote Sensing of Environment* 76:250-259. [https://doi.org/10.1016/S0034-4257\(00\)00207-8](https://doi.org/10.1016/S0034-4257(00)00207-8)
- Hook, S.J. Myers, J.J., Thome, K.J., Fitzgerald, M., and A.B. Kahle. 2001. The MODIS/ASTER airborne simulator (MASTER) - a new instrument for earth science studies. *Remote Sensing of Environment* 76:93-102. [https://doi.org/10.1016/S0034-4257\(00\)00195-4](https://doi.org/10.1016/S0034-4257(00)00195-4)
- JPL. 2021a. Calibration and Validation, MASTER: MODIS/ASTER Airborne Simulator. Jet Propulsion Laboratory, California Institute of Technology, Pasadena, California, USA. <https://masterprojects.jpl.nasa.gov/cal-val>
- JPL. 2021b. Science objectives, MASTER: MODIS/ASTER Airborne Simulator. Jet Propulsion Laboratory, California Institute of Technology, Pasadena, California, USA. <https://masterprojects.jpl.nasa.gov/objectives>
- King, M.D., W.P. Menzel, P.S. Grant, J.S. Myers, G.T. Arnold, S.E. Platnick, L.E. Gumley, S.C. Tsay, C.C. Moeller, M. Fitzgerald, K.S. Brown, and F.G. Osterwisch. 1996. Airborne scanning spectrometer for remote sensing of cloud, aerosol, water vapor and surface properties. *J. Atmospheric and Oceanic Technology* 13:777-794. [https://doi.org/10.1175/1520-0426\(1996\)013<0777:ASSFRS>2.0.CO;2](https://doi.org/10.1175/1520-0426(1996)013<0777:ASSFRS>2.0.CO;2)
- Li, P., and W.M. Moon. 2004. Land cover classification using MODIS-ASTER airborne simulator (MASTER) data and NDVI: A case study of the Kochang area, Korea. *Canadian J. Remote Sensing* 30:123-126. <https://doi.org/10.5589/m03-061>
- Veraverbeke, S., S. Harris, and S. Hook. 2011. Evaluating spectral indices for burned area discrimination using MODIS/ASTER (MASTER) airborne simulator data. *Remote Sensing of Environment* 115:2702-2709. <https://doi.org/10.1016/j.rse.2011.06.010>
- Zhao, Q., and E.A. Wentz. 2016. A MODIS/ASTER Airborne Simulator (MASTER) imagery for urban heat island research. *Data* 1:7. <https://doi.org/10.3390/data1010007>

🏠 Home

About Us

- Mission
- Data Use and Citation Policy
- User Working Group
- Partners

Get Data

- Science Themes
- NASA Projects
- All Datasets

Submit Data

- Submit Data Form
- Data Scope and Acceptance
- Data Authorship Policy
- Data Publication Timeline
- Detailed Submission Guidelines

Tools

- MODIS
- THREDDS
- SDAT
- Daymet
- Airborne Data Visualizer
- Soil Moisture Visualizer
- Land - Water Checker

Resources

- Learning
- Data Management
- News
- Earthdata Forum [🔗](#)

🗨️ Contact Us

