

RLC FOREST FIRE IMAGES IN RUSSIA, 1998-1999

Summary:

This data set consists of images of forest fires in Russia from NOAA's Operational Significant Event Imagery (OSEI) archive (<http://www.osei.noaa.gov>) for the 1998 and 1999 seasons. OSEI fire products include multichannel color composite imagery of wildfire and controlled burn events. Products in this event group show fire, smoke, and hotspots (FSMHS) from the fires. The files are OSEI Standard-format images (.gif or .jpg) saved at full resolution and at high image quality (see Figure 1).

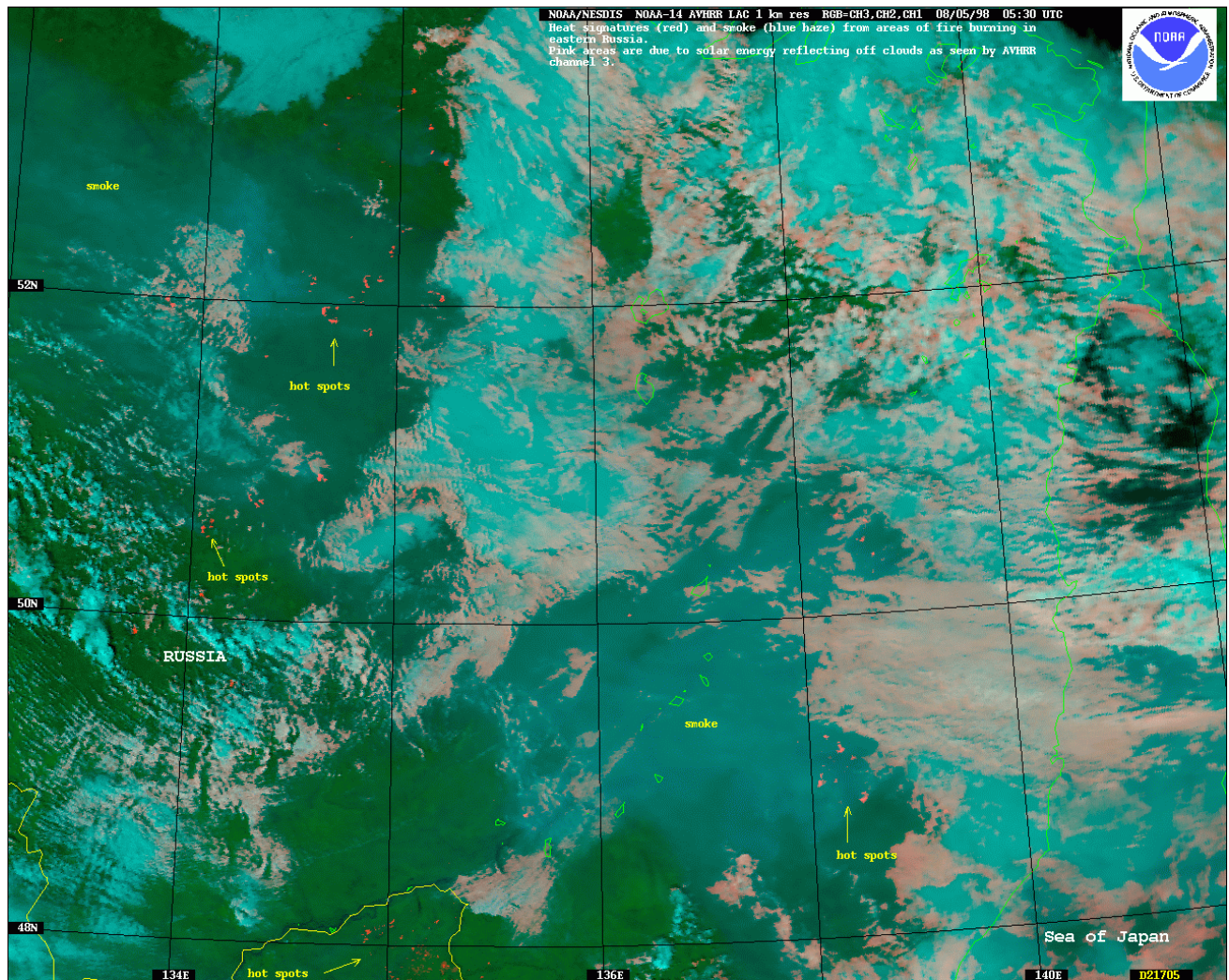


Figure 1. Fires burning in eastern Russia in August 1998. From NOAA's Operational Significant Event Imagery (OSEI) archive.

Data Citation:

Cite this data set as follows:

Ambrose, S. D., T. A. Stone, and P. Schlesinger. 2003. RLC Forest Fire Images in Russia, 1998-1999. Data set. Available on-line [<http://www.daac.ornl.gov>] from Oak Ridge National Laboratory Distributed Active Archive Center, Oak Ridge, Tennessee, U.S.A. [doi:10.3334/ORNLDAAC/694](https://doi.org/10.3334/ORNLDAAC/694).

Table of Contents:

- [1 Data Set Overview](#)
- [2 Data Characteristics](#)
- [3 Applications and Derivation](#)
- [4 Quality Assessment](#)
- [5 Acquisition Materials and Methods](#)
- [6 Data Description and Access](#)
- [7 References](#)
- [8 Glossary and Acronyms](#)
- [9 Document Information](#)

1. Data Set Overview:

Data Set Contents:

This data set consists of images of forest fires in Russia from NOAA's OSEIarchive (<http://www.osei.noaa.gov>) for the 1998 and 1999 seasons. See section Sample for a sample image.

Related Data Sets:

See other Russian Land Cover data sets.

Title of Investigation:

Measuring Changes to Russian Forest Over the Last 25 Years

Investigator(s) Name and E-mail:

Name	Email
Stone, T.A.	tstone@whrc.org
Schlesinger, P.	pschles@whrc.org
Ambrose, S.D.	Stephen.Ambrose@noaa.gov

Technical Contact(s) Name, Telephone, and E-mail:

Name	Email	Phone
Schlesinger, P.	pschles@whrc.org	(508)540-9900

Future Modifications and Plans:

Not available.

2. Data Characteristics:

Study Area:

Western, Central, and Eastern Russia images at about 1:1 million scale in Geographic projection.

Temporal Coverage:

Forest fire seasons 1998-1999.

Parameter or Variable:

Table for: Numerous .gif and .jpg files

Variable	Description	Units	Instrument	Range
FIRE OCCURRENCE	Active fires	Unitless	AVHRR	Not applicable

FIRE OCCURRENCE footnote: For 1998 there are 71 .jpg and .gif files of varying sizes. For 1999 there are 23 .jpg and .gif files of varying sizes.

Data Organization

Granule Name or Description:

Numerous .gif and .jpg files. See companion file ftp://daac.ornl.gov/data/russian_land_cover/fire_images_russia/comp/fire_image_index.csv for a complete listing of all files.

Data Format:

An OSEI Standard-format image (.gif or .jpg) saved at full resolution and at high image quality. Resultant file sizes are generally at or above 500K and sometimes exceed 1M. Dimensions vary by image but are generally at least 1024X1024.

Sample Data Record:

All data files are in .jpg and .gif format as downloaded from the OSEI archive.

Satellite information that appears in original filenames below:

GM - GMS-11 GMS = Geostationary Meteorological Satellite

N2 - NOAA-12 (AVHRR)

N4 - NOAA-14 (AVHRR)

3. Application and Derivation:

Typical Application of Data:

Regional-, national-, and sub-national-level forest and land use change assessments

Theory of Measurements:

Not available

Derivation Techniques and Algorithms:

The source data were acquired from the OSEI on-line archive (see <http://www.osei.noaa.gov>).

4. Quality Assessment:

Data Usage Guidance:

Errors and Limitations:

Error Sources:

Not available

Limitations of the Data:

Not available

Known Problems with the Data:

Not available

Quality Assessment Activities:

Not available

Other Relevant Information about the Study:

Not available

5. Acquisition Materials and Methods:

Source or Platform Collection Environment:

NOAA satellites carrying AVHRR sensor

Source or Platform Program Management:

Not available

Source or Platform Mission Objectives:

Coverage Information:

Not available

Attitude Characteristics:

Not available

Data Collection System:

Not available

Communication Links:

Not available

List of Sensors or Instruments:

AVHRR

Ground Segment Information:

Data Acquisition and Processing:

Not available

Latitude Crossing Times:

Not available

Sensor or Instrument Descriptions

Key Variables:

Not available

Principles of Operation:

Not available

Sensor or Instrument Measurement Geometry:

Not available

Manufacturer of Sensor or Instrument:

Not available

Calibration:

Specifications:

Not applicable

Tolerance:

Not applicable

Frequency of Calibration:

Not applicable

Other Calibration Information:

Not applicable

Data Acquisition Methods:

The source data were acquired from the OSEI on-line archive (see <http://www.osei.noaa.gov>).

Observations:

Data Notes:

Not available

6. Data Description and Access:

Data Access:

This data set is available from the Oak Ridge National Laboratory (ORNL) Distributed Active Archive Center (DAAC).

Data Archive Center:

Contact for Data Center Access Information:

E-mail: uso@daac.ornl.gov

Telephone: +1 (865) 241-3952

FAX: +1 (865) 574-4665

Product Availability:

Data can be accessed electronically on the ORNL DAAC's anonymous FTP site or from the DAAC's search and order system. Data files are also available by request from uso@daac.ornl.gov.

Reading the Media:

Not available

Software and Analyses Tools:

Not available

7. References:

The published reference for the source data is as follows:

NOAA's Operational Significant Event Imagery (OSEI) on-line archive
(<http://www.osei.noaa.gov>)

8. Glossary and Acronyms:

Not available

Glossary

Acronyms

Acronym Definition

AVHRR Advanced Very High Resolution Radiometer

GIF Graphic Image Format

FSMHS Fire, SMOke, and Hotspots

NOAA National Oceanic and Atmospheric Administration
OSEI& Operational Significant Event Imagery
JPEG Joint Photographic Experts Group

9. Document Information:

2003/11/26

Document Review Date:

2003/11/26

Document Curator:

webmaster@www.daac.ornl.gov

Document URL:

<http://daac.ornl.gov>