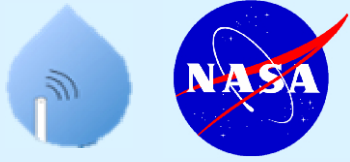


SoilSCAPE Site: Terra d'Oro Vineyard, CA



Latitude: 38.506225

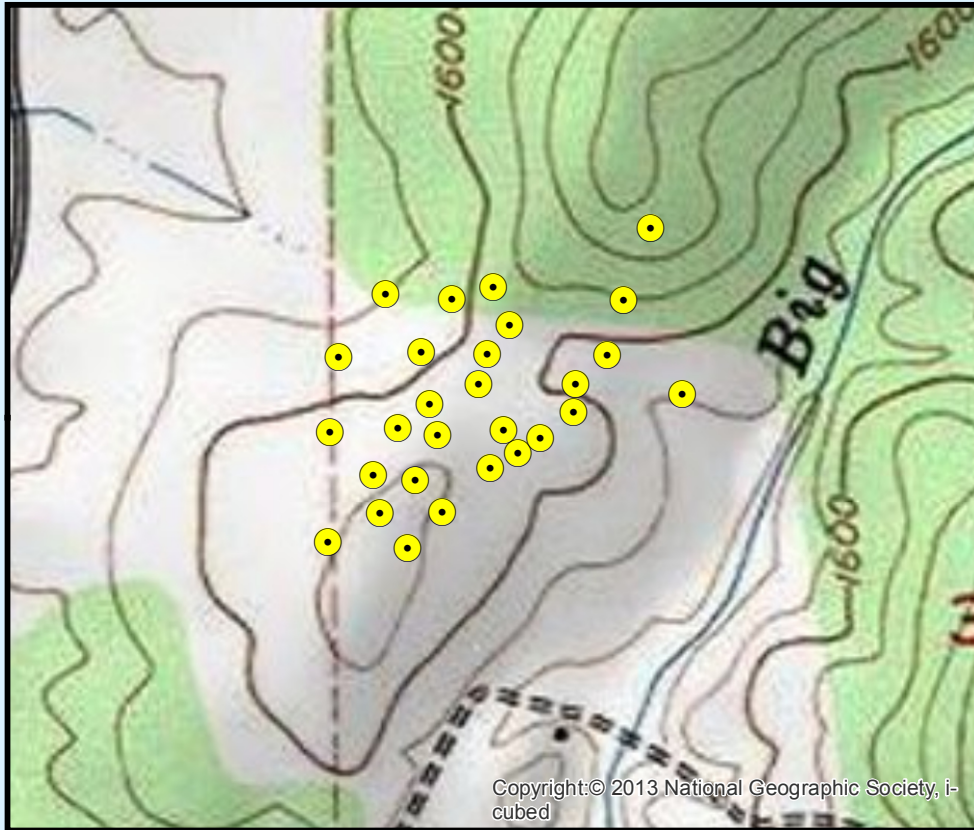
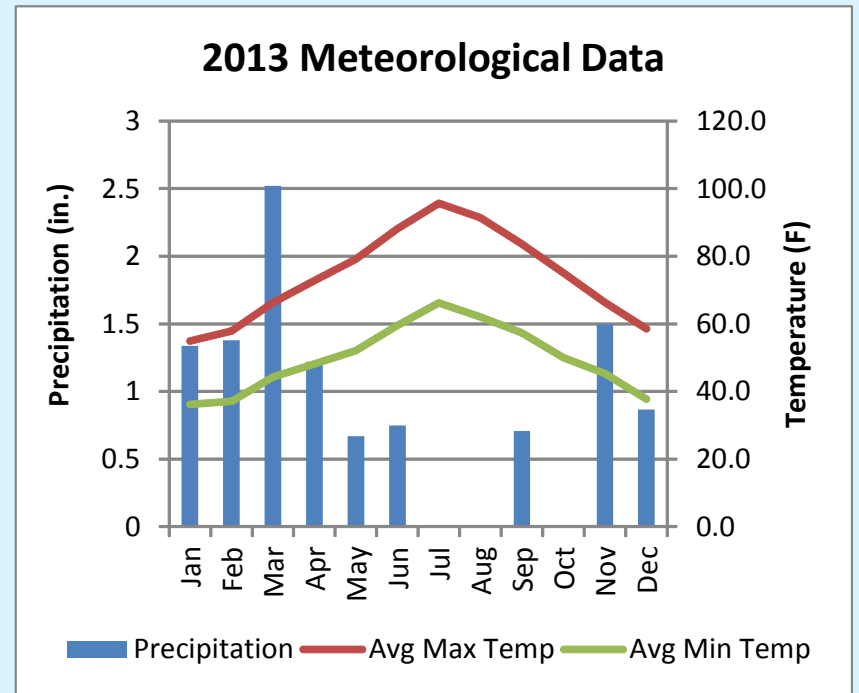
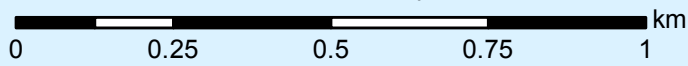
Longitude: -120.796965

Koppen-Geiger Climate Classification:
Temperate/Dry Summer/Hot Summer

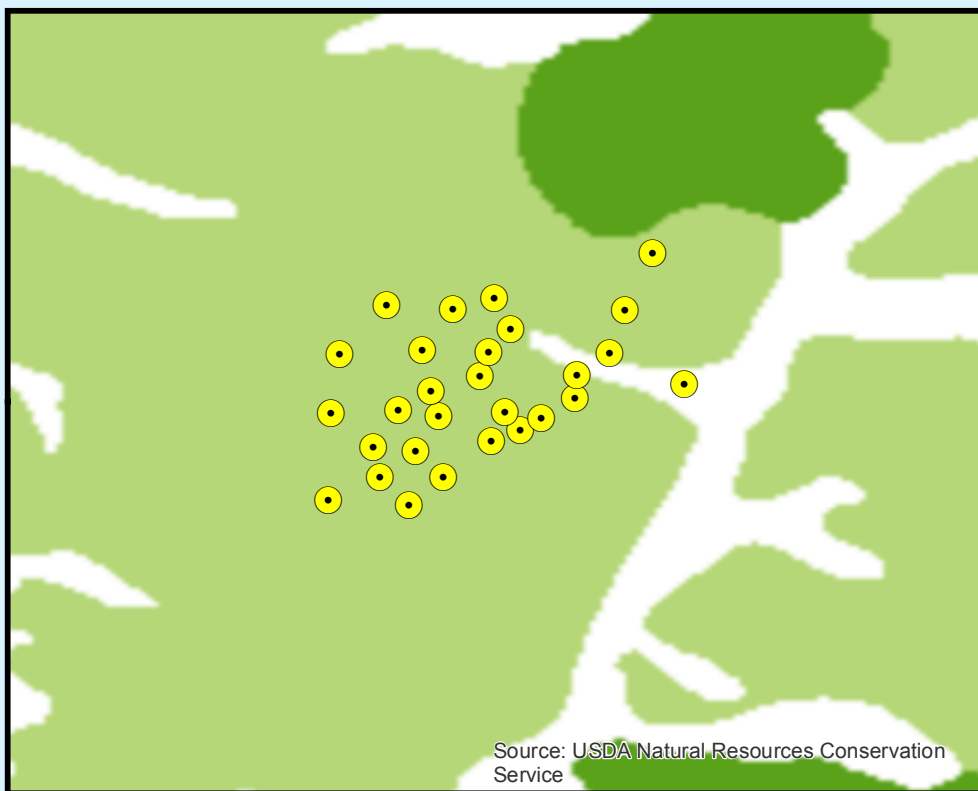
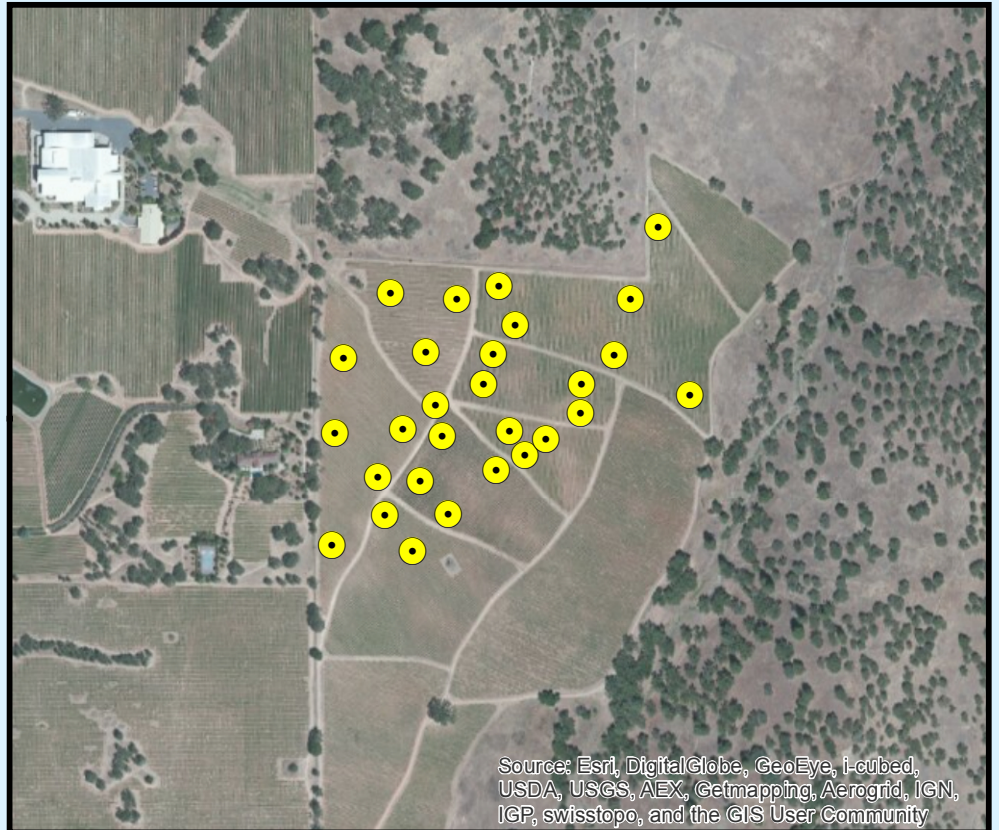
Dataset Link: http://webmap.ornl.gov/wcsdown/dataset.jsp?ds_id=10012

● Soil Moisture Sensor Location

Scale for all maps:

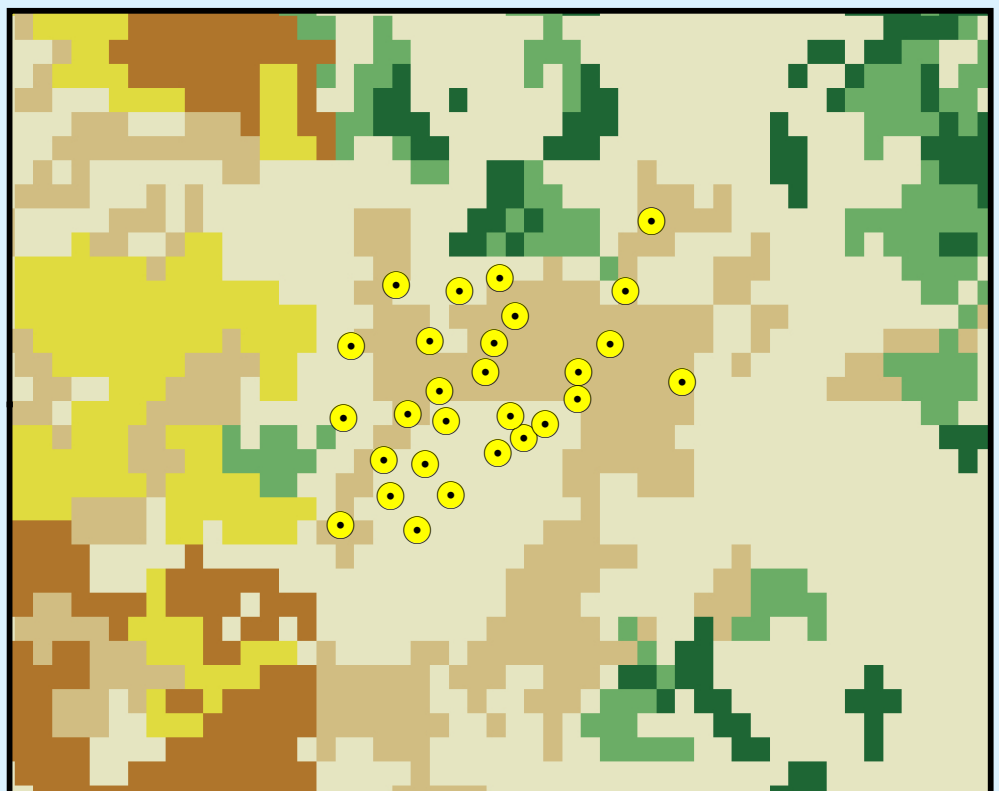


Site Elevation: Approximately 1560 - 1695 ft



Soil Taxonomy:

- | | |
|---------------|----------------------|
| ■ Alfisols | ■ Miscellaneous area |
| ■ Andisols | ■ Mollisols |
| ■ Aridisols | ■ Oxisols |
| ■ Entisols | ■ Spodosols |
| ■ Gelisols | ■ Ultisols |
| ■ Histosols | ■ Vertisols |
| ■ Inceptisols | ■ Water |



NLCD Landcover:

- 41-Deciduous Forest
- 42-Evergreen Forest
- 52-Shrub/Scrub
- 71-Grassland/Herbaceous
- 81-Pasture/Hay
- 82-Cultivated Crops

NLCD Landcover Dataset Link:

http://webmap.ornl.gov/wcsdown/dataset.jsp?ds_id=10009