



**Figure 2**  
**South Slope Waring Mountains**

- **White spruce-shrubs type**



**Figure 3**  
**Unalakleet River Valley a few miles east of Norton Sound**

- **Cottongrass-sedge-dwarf heath shrub complex (foreground)**
- **Dwarf birch-heath-lichens type (medium-dark area to left)**
- **Alder type (very dark area on plain near center)**
- **Feltleaf willow type (light-colored area background)**
- **White spruce shrub type (along river at foot of hill)**
- **Alaska white birch-shrubs type: (dense forest on hill)**
- **White spruce-Alaska white birch shrub type (open stands)**
- **Cottongrass-sedge dwarf heath shrub complex (distance at left)**



Figure 4

View of Nome River valley about 9 miles NE of Nome

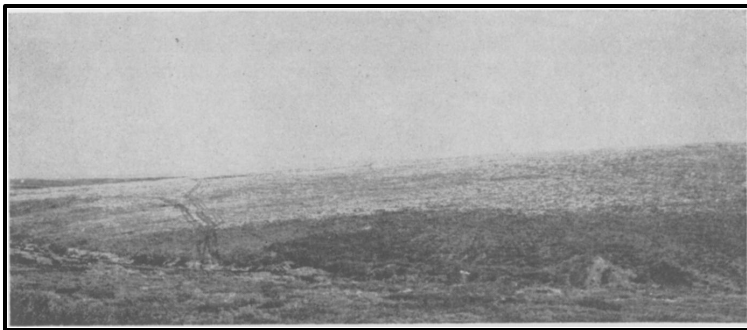
- Large areas of willow, birch-willow and birch shrub types
- Dwarf birch-heath-lichens type (lighter gray)
- Blueberry-heath-lichens type (darker)
- Sedge marsh (between shrubs)
- Cottongrass complex (on distant slopes and benches)



Figure 5

Nome River Valley about 10 miles NE of Nome

- Sedge marsh stand (gentle slope) scattered hummocks are dark due to cover of dwarf shrubs.
- Dwarf birch-heath-lichens type (medium-dark area to left)
- Alder type (very dark area on plain near center)
- Feltleaf willow type (light-colored area background)
- White spruce shrub type (along river at foot of hill)
- Alaska white birch-shrubs type: (dense forest on hill)
- White spruce-Alaska white birch shrub type (open stands)
- Cottongrass-sedge dwarf heath shrub complex (distance at left)



**Figure 6**  
Coffee Creek, west of Bendeleben Mountains



**Figure 7**  
At Black Hill, about 1500 feet elevation head of Kougarok River.



Figure 8

On Baldwin Peninsula

Cottongrass-sedge-dwarf heath shrub complex

(Dwarf birch prominent at left between the cottongrass tussocks.)