

Canadian Western Arctic Photographs (Lambert 1968)



Figure 10. *Salicetum phleobophyllae*



Figure 11. *Lupino-Dryadetosum alaskensis (depauperatum)*



Figure 12. *Lupino-Dryadetosum alaskensis (dryado-salicetosum reticulatae)*



Figure 13. *Betulo-Ledetum decumbentis (betulo-ledetosum decumbentis)*



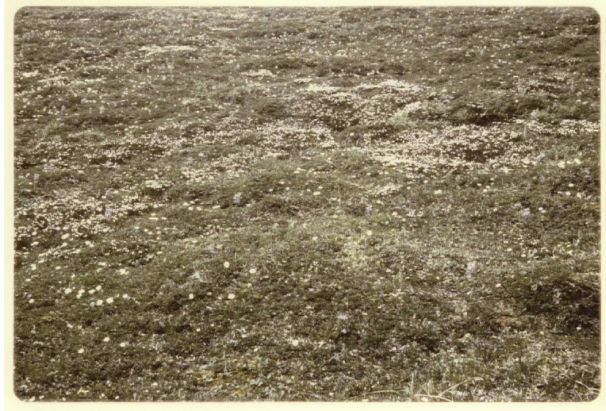


Figure 14. *Betulo-Ledetum decumbentis (cassiopeetosum tetragonae)*



Figure 15. *Vaccinio-Betuletum glandulosae (fruticulosum)*



Figure 16. *Vaccinio-Betuletum glandulosae (fruticosum)*



Figure 17. *Betulo-Eriphoretum vaginati (betulo-eriphoretosum vaginati)*



Figure 18. *Betulo-Eriphoretum vaginati (salicetosum reticulatae)*



Figure 19. *Arctophiletum fulvae*



Figure 20. *Eriophoretum angustifolii*



Figure 21. *Caricetum aquatilis*





Figure 22. *Salicetum pseudopolaris*



Figure 24. *Salicetum chamissonis* (*salicosum chamissonis*)



Figure 25. *Salicetum pulchrae* (*salicosum pulchrae*)